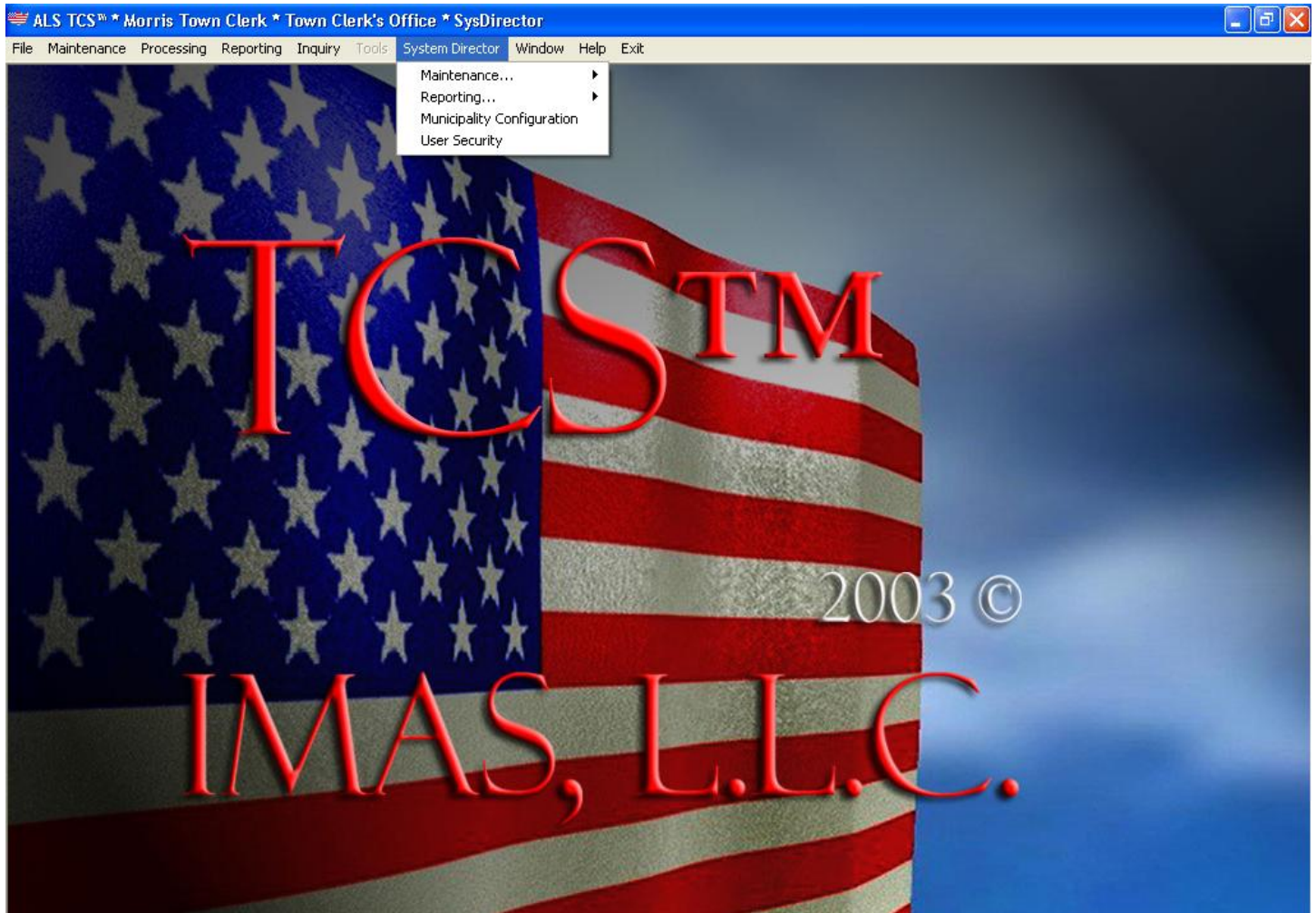


# TCS™-System Director©

## Version 4.2

### System Director Menu

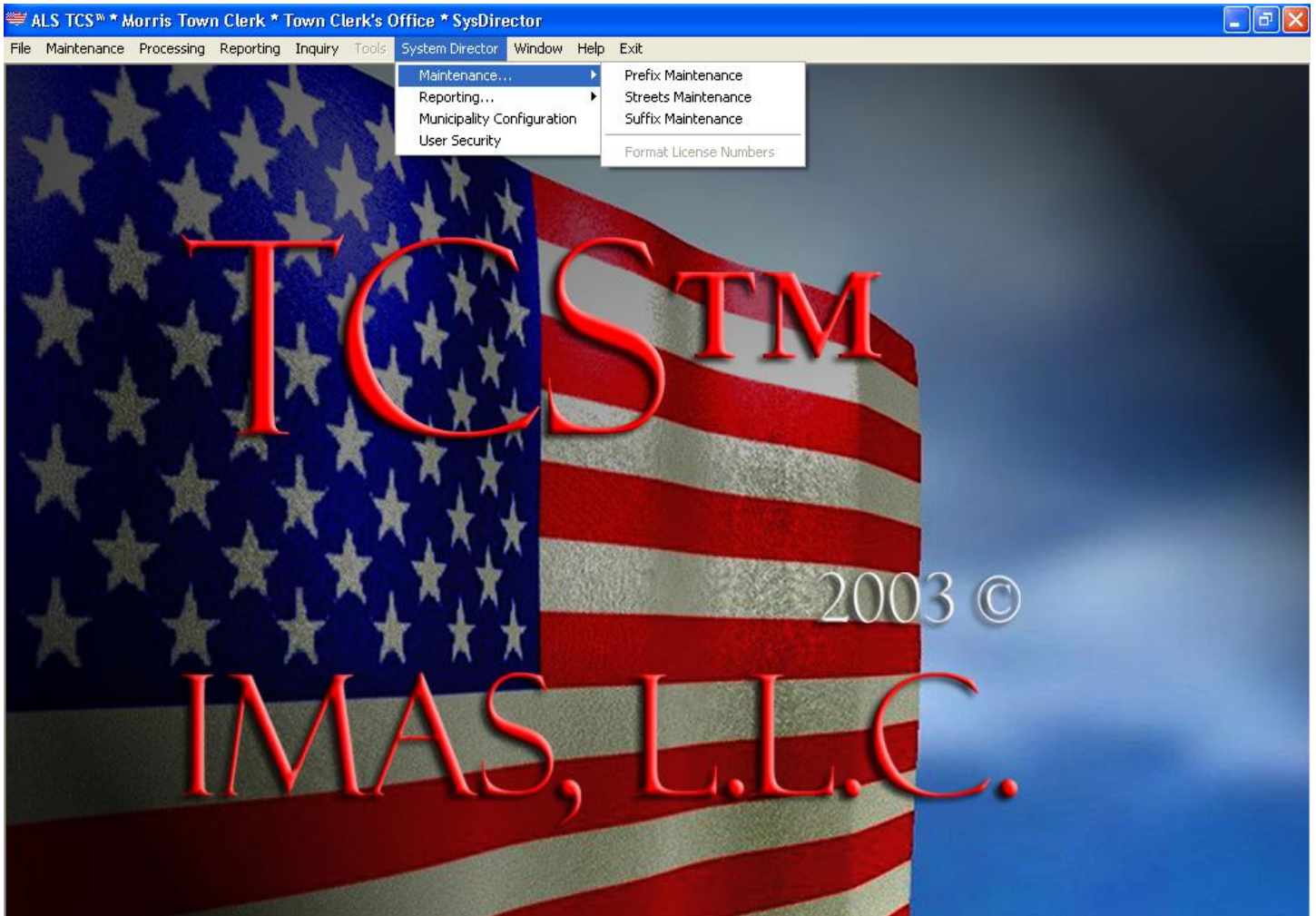
Where Prefixes, Suffixes and Streets can be added deleted or edited.  
Municipality Information can be entered and maintained.  
User Security Levels can be defined.



# TCS™-System Director©

## Version 4.2

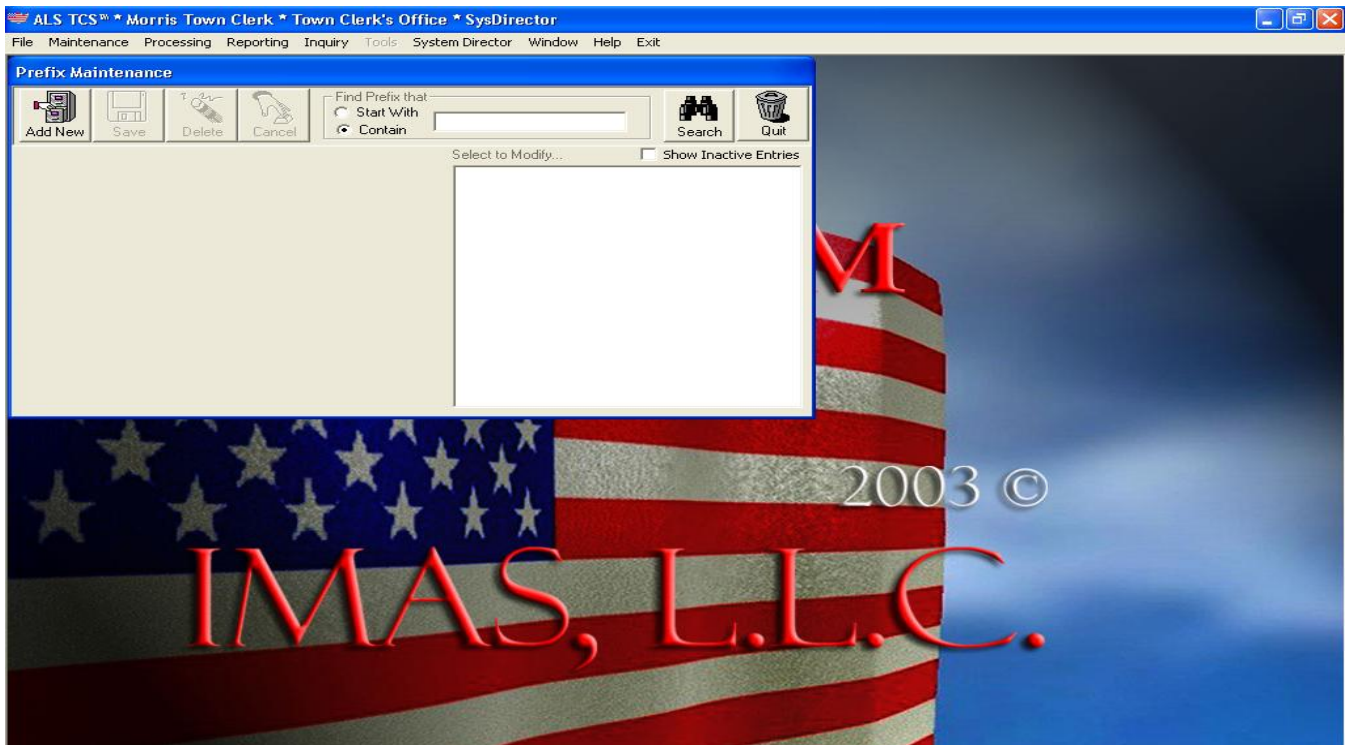
### Maintenance



# TCS™-System Director©

## Version 4.2

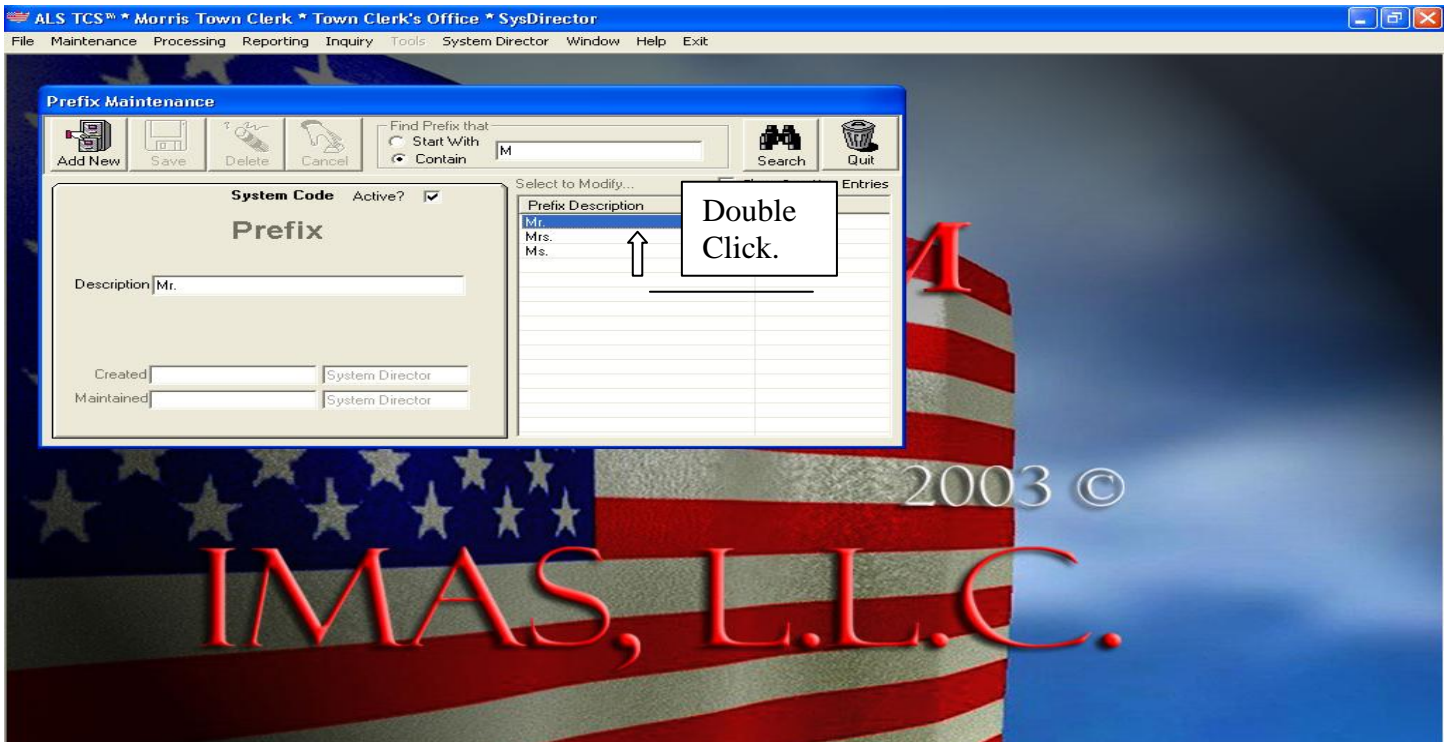
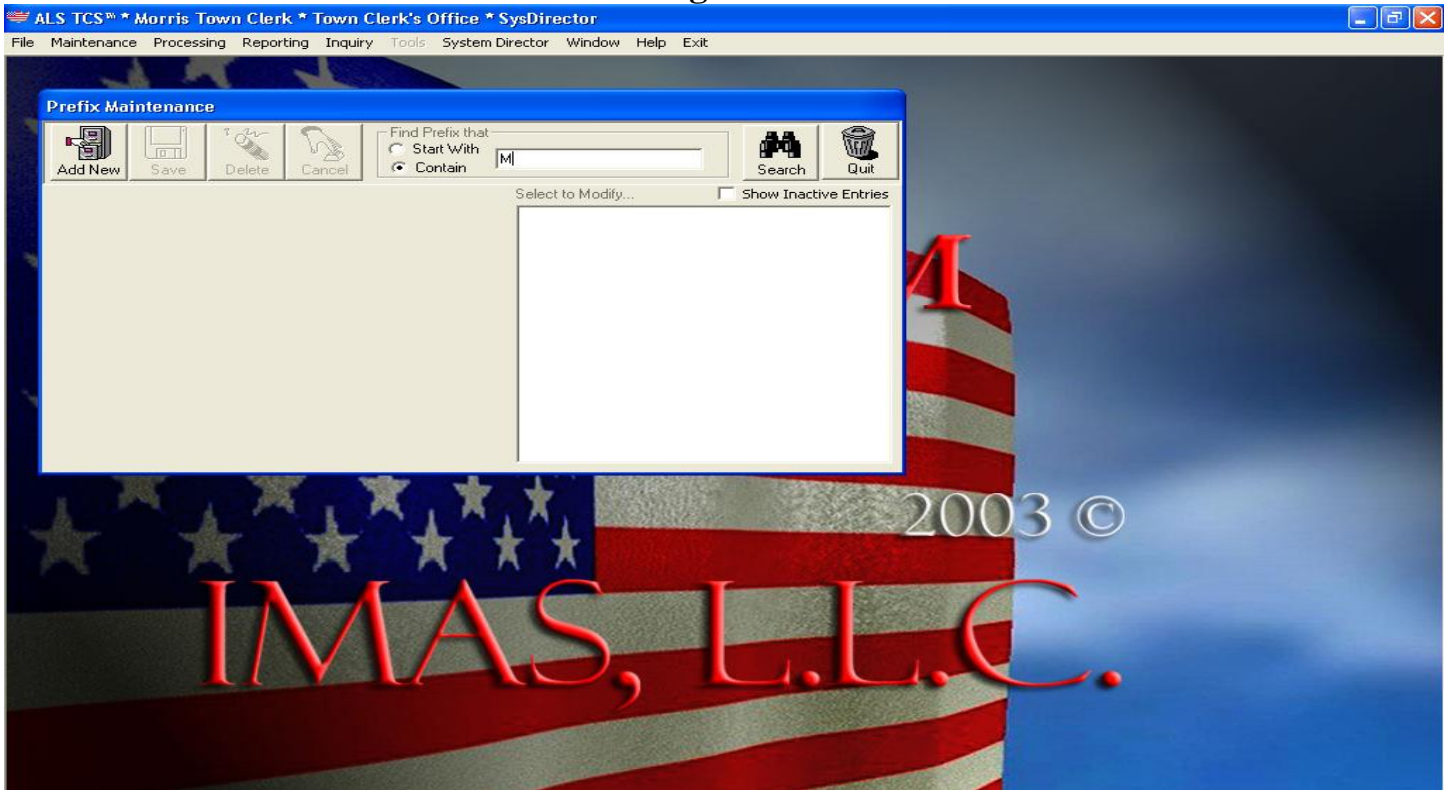
### Prefix Maintenance:



# TCS™-System Director©

## Version 4.2

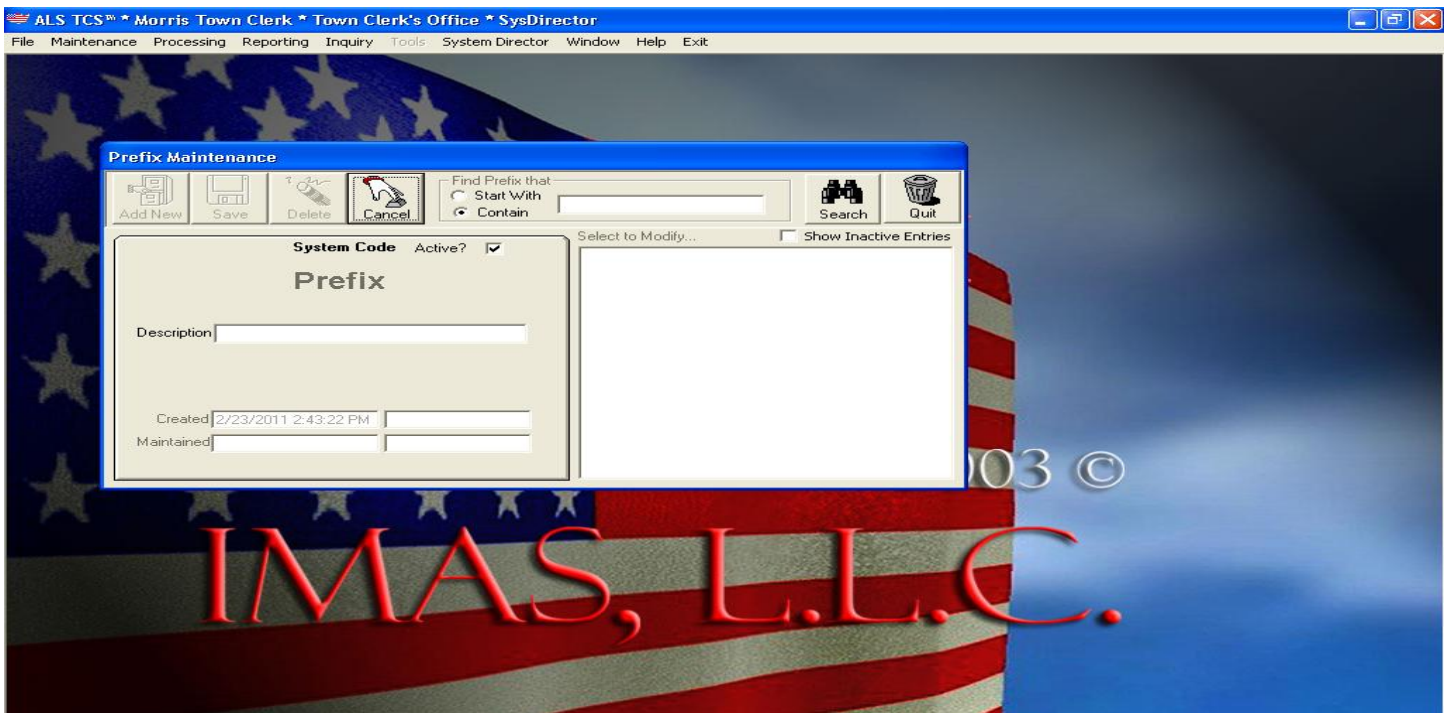
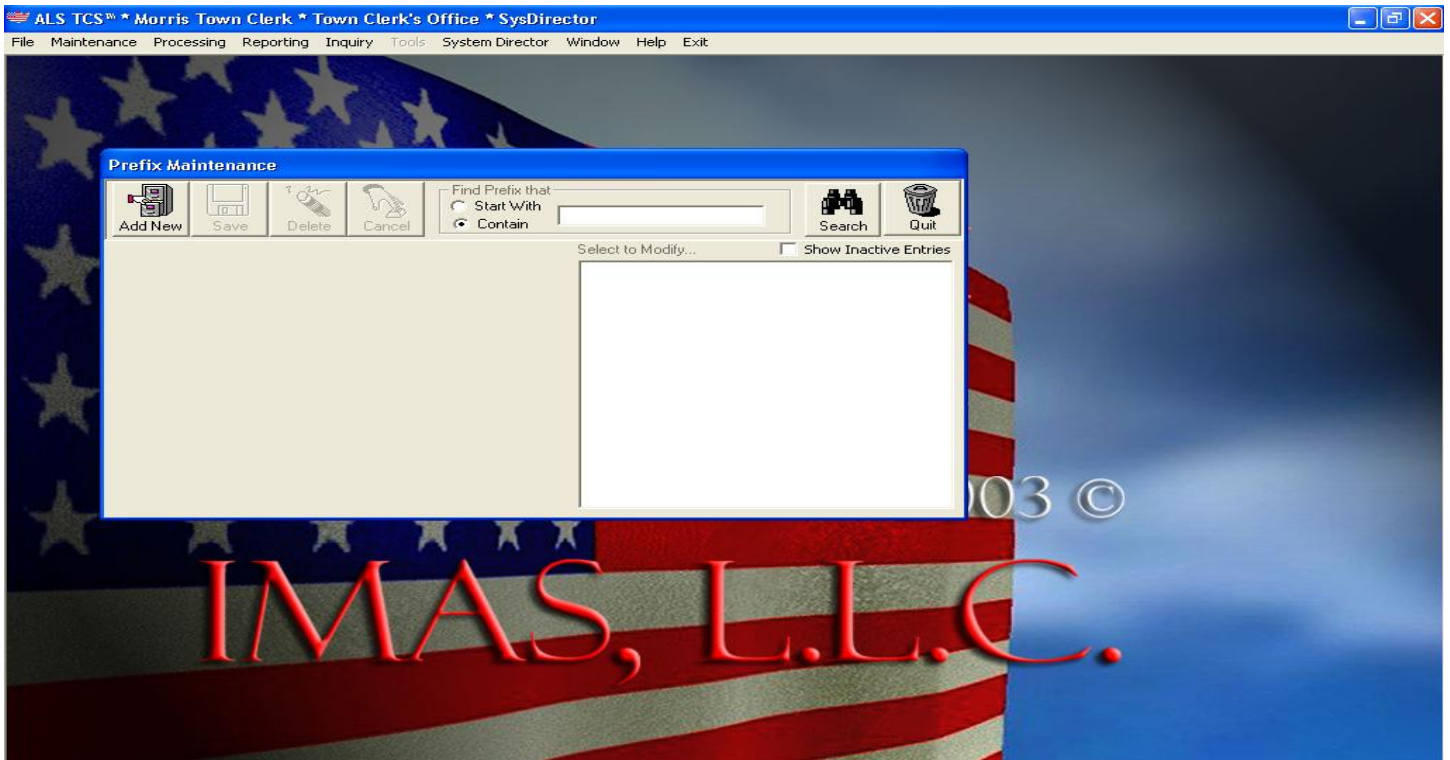
### Searching for a Prefix



# TCS™-System Director©

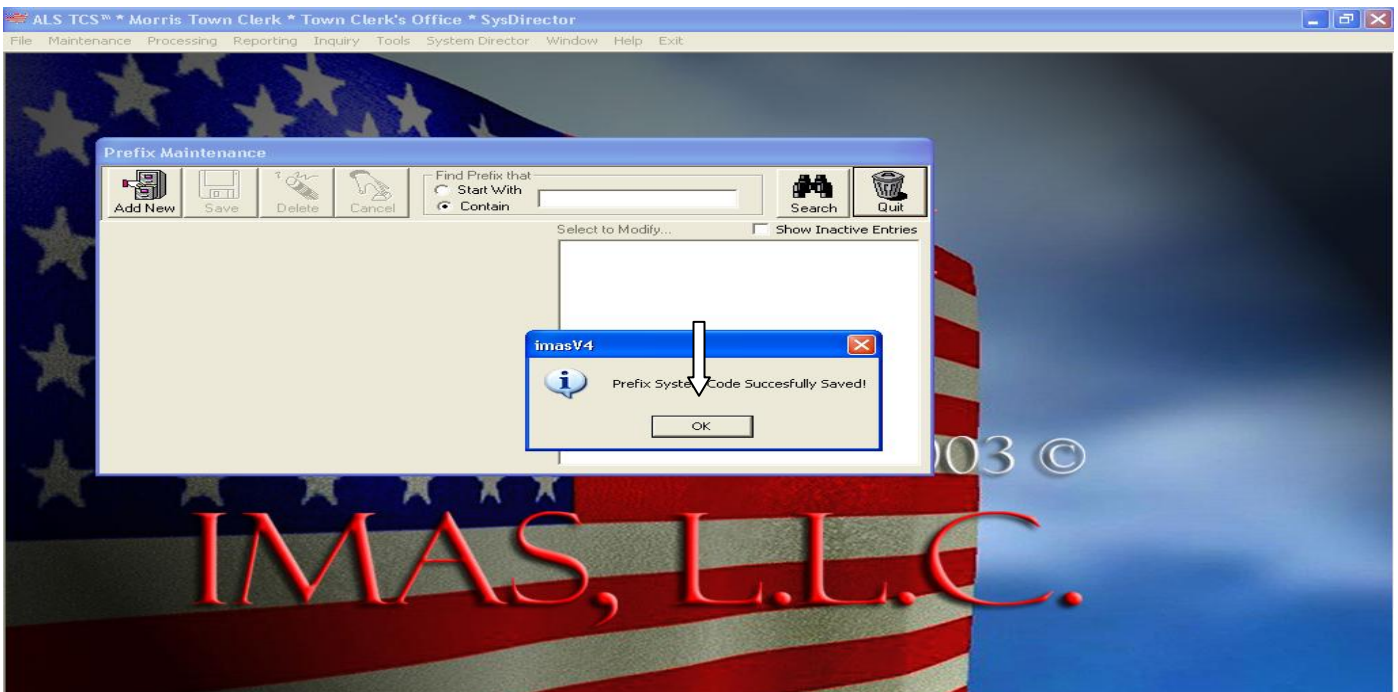
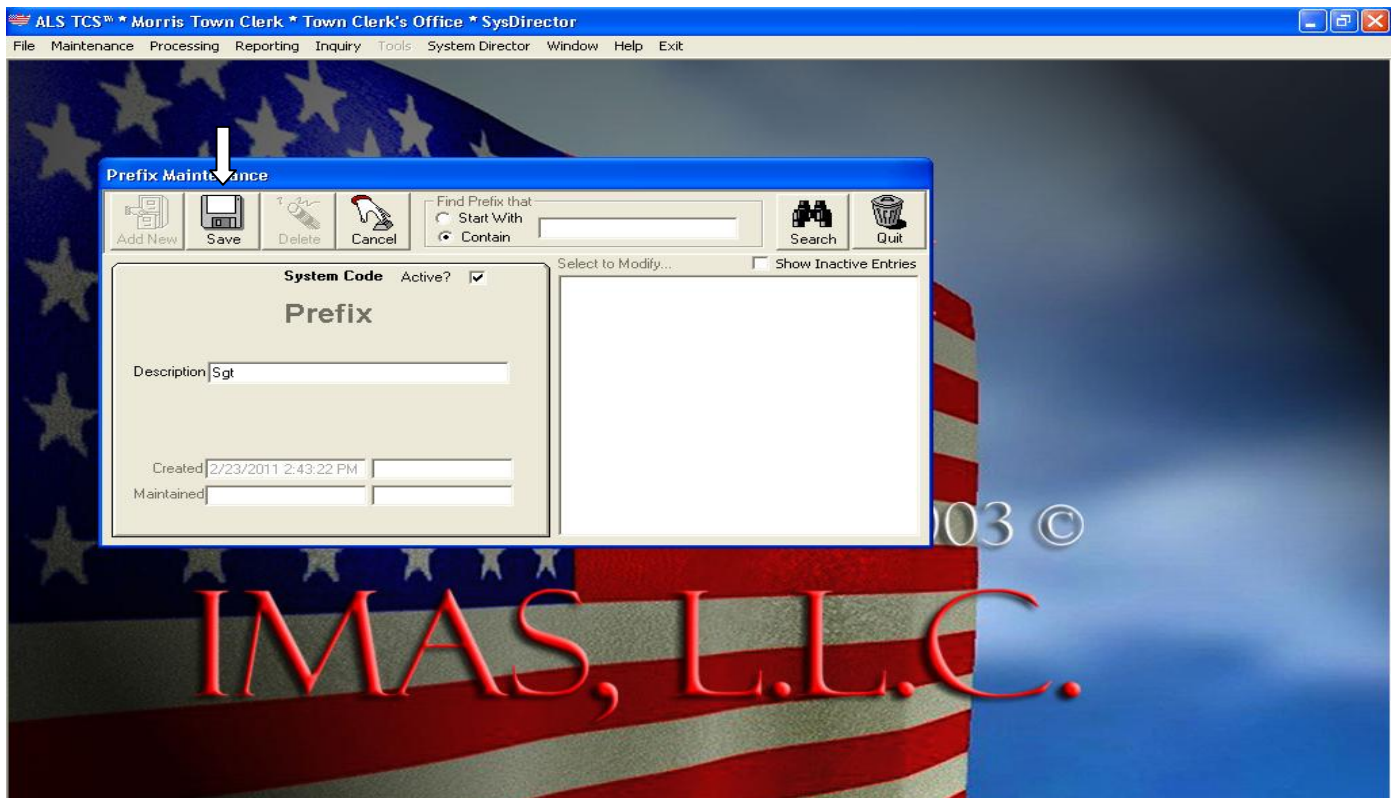
## Version 4.2

### Adding a Prefix



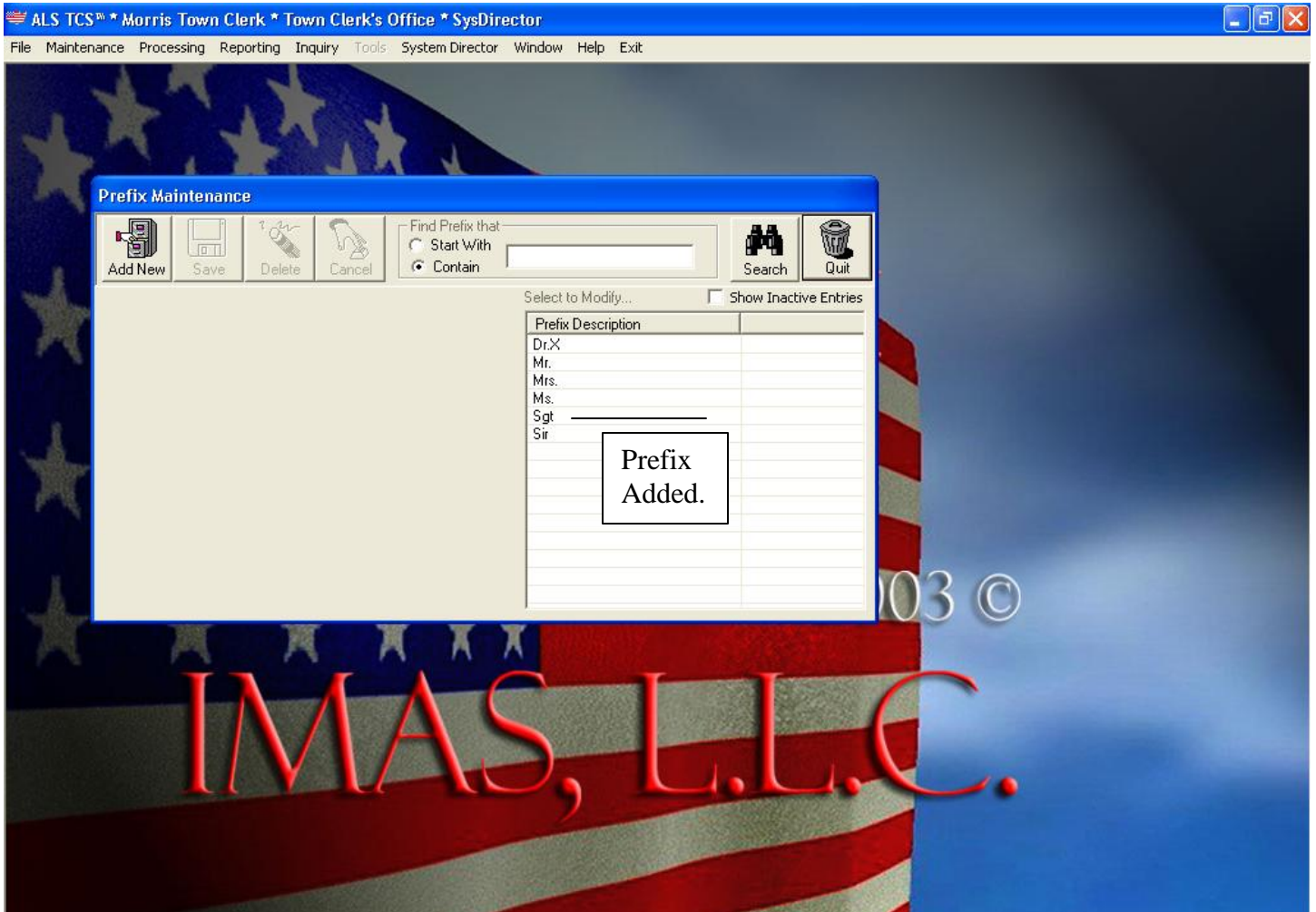
# TCS™-System Director©

## Version 4.2



# TCS™-System Director©

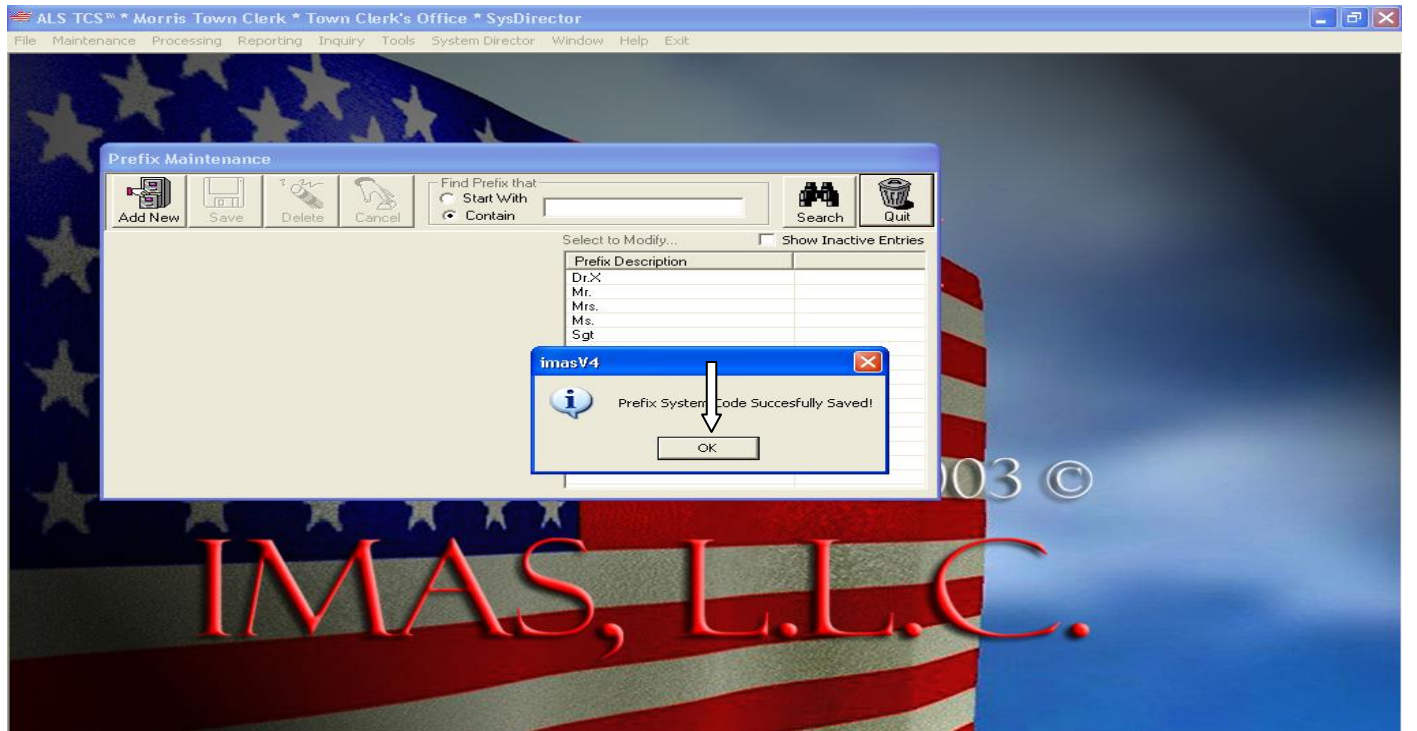
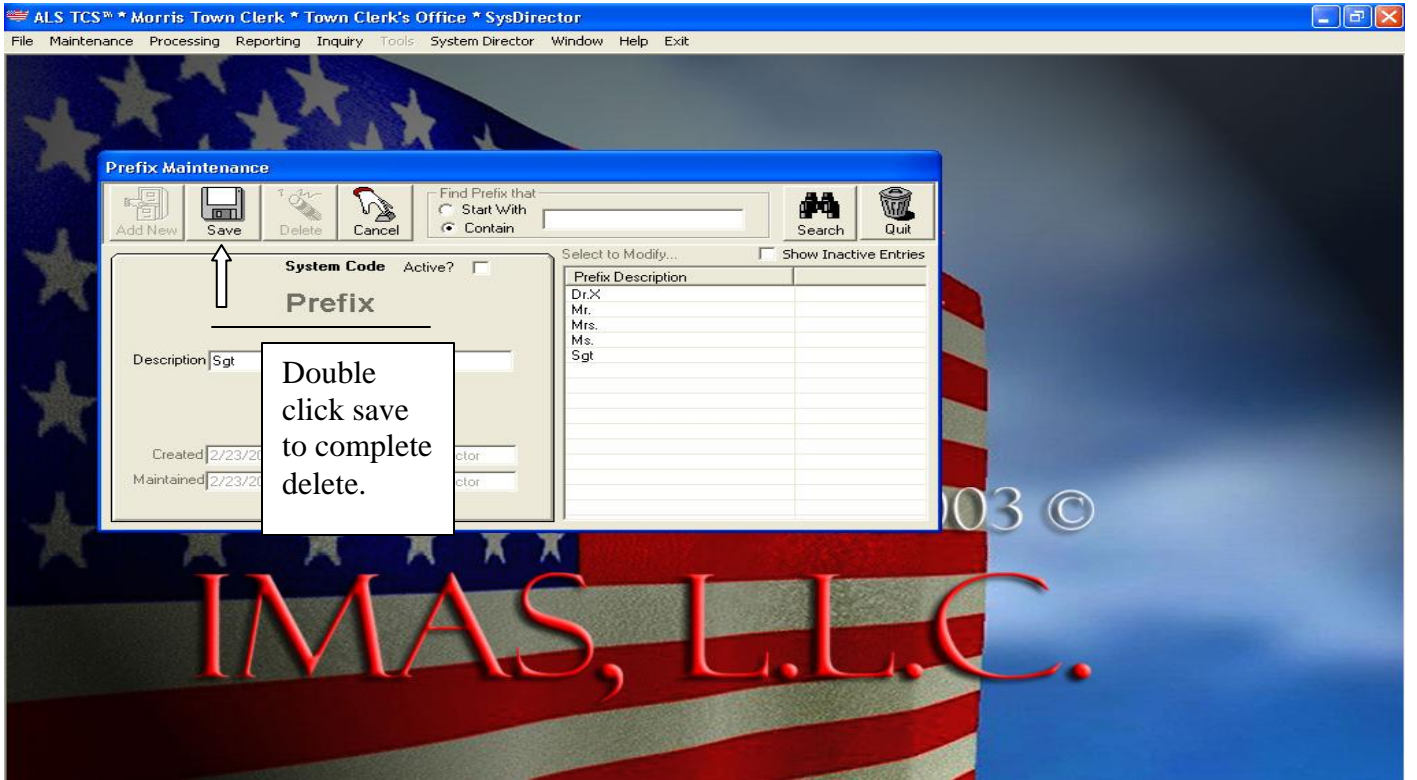
## Version 4.2





# TCS™-System Director©

## Version 4.2

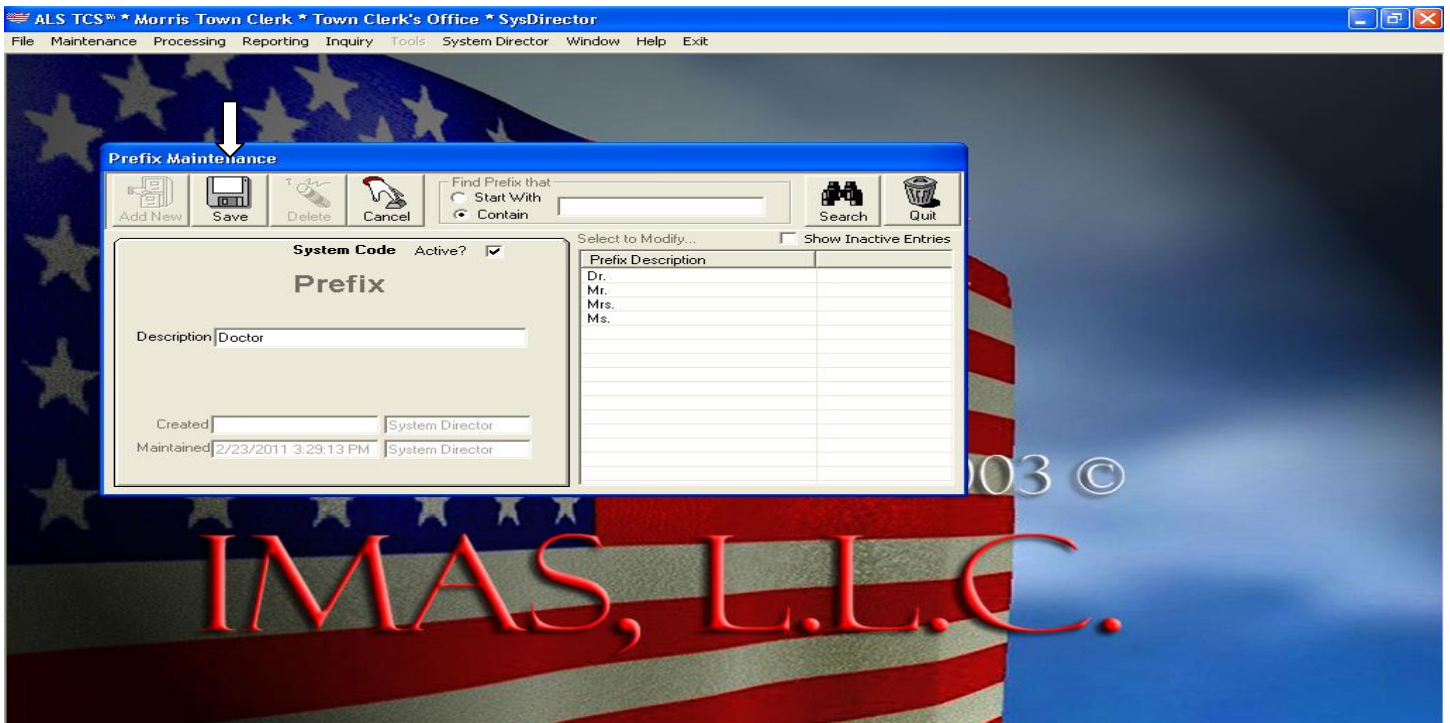
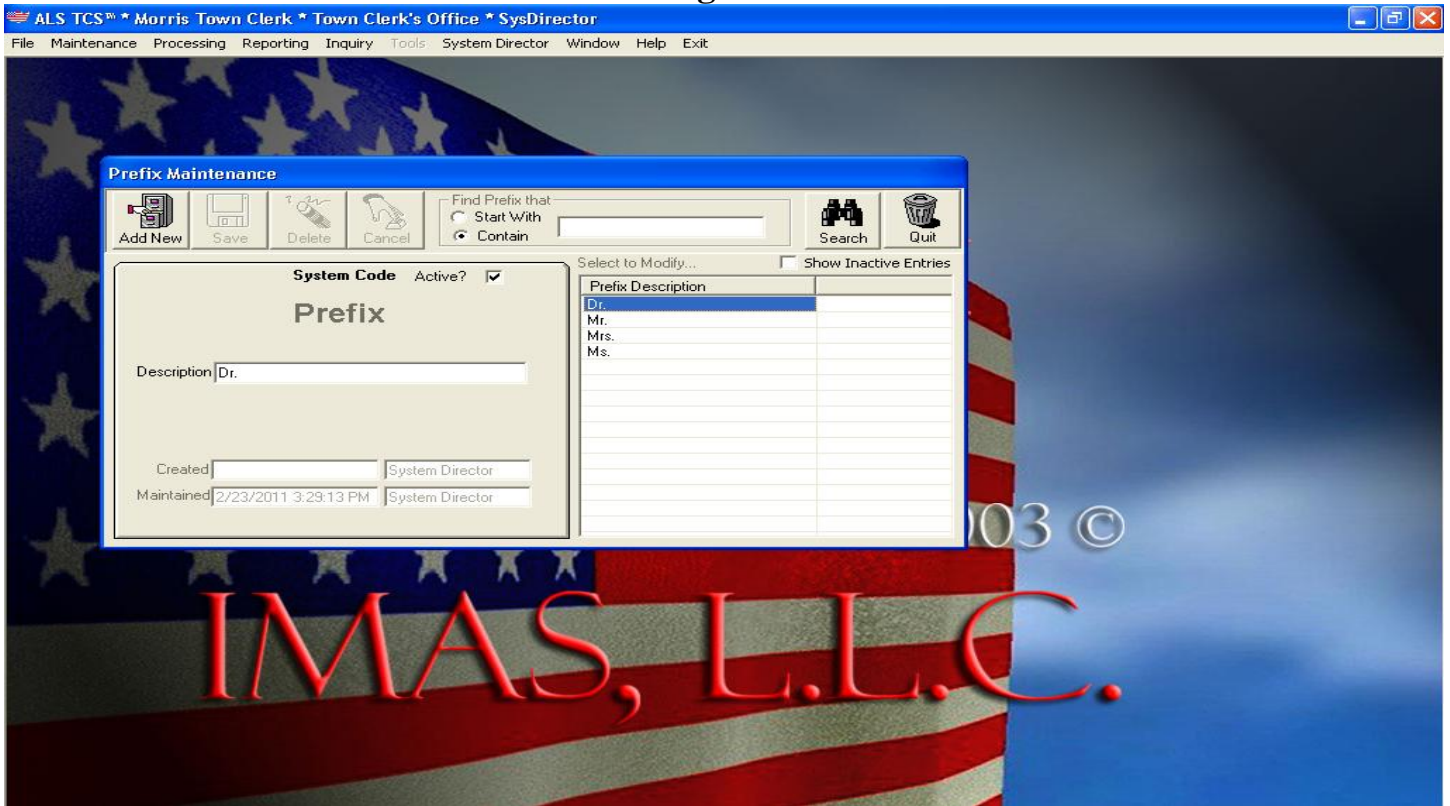




# TCS™-System Director©

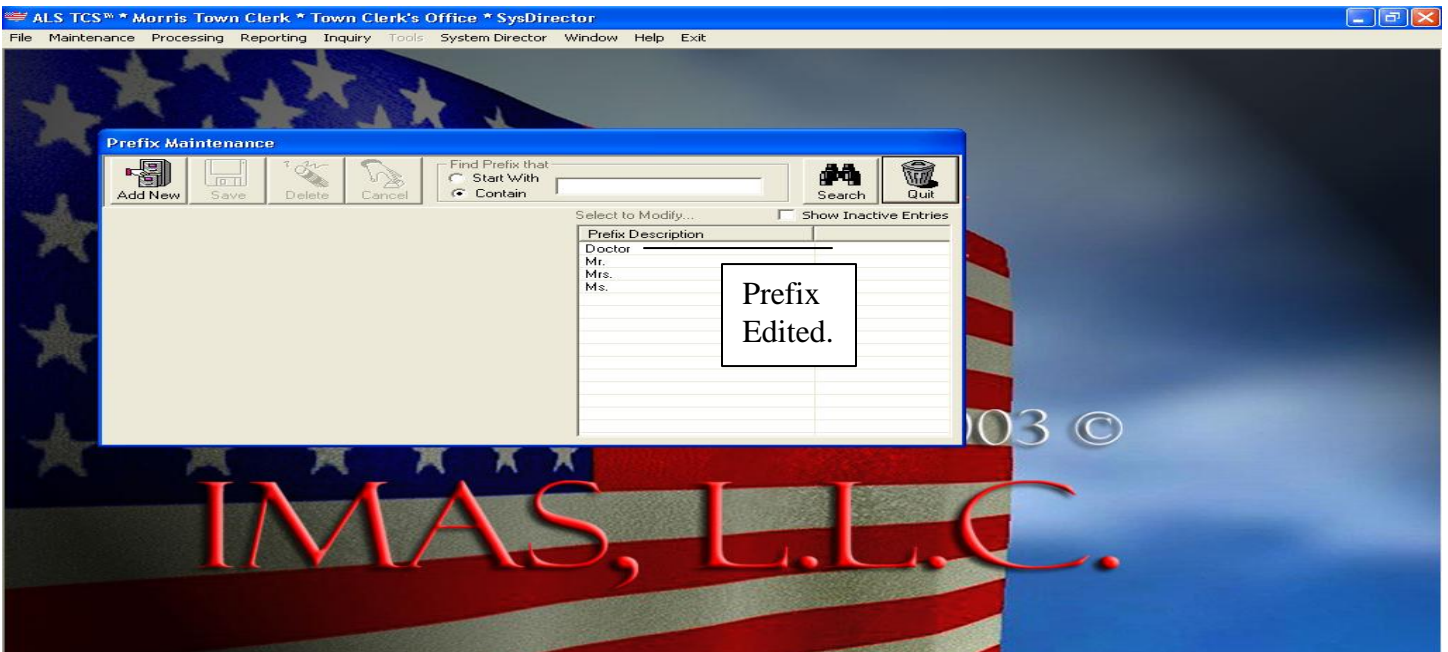
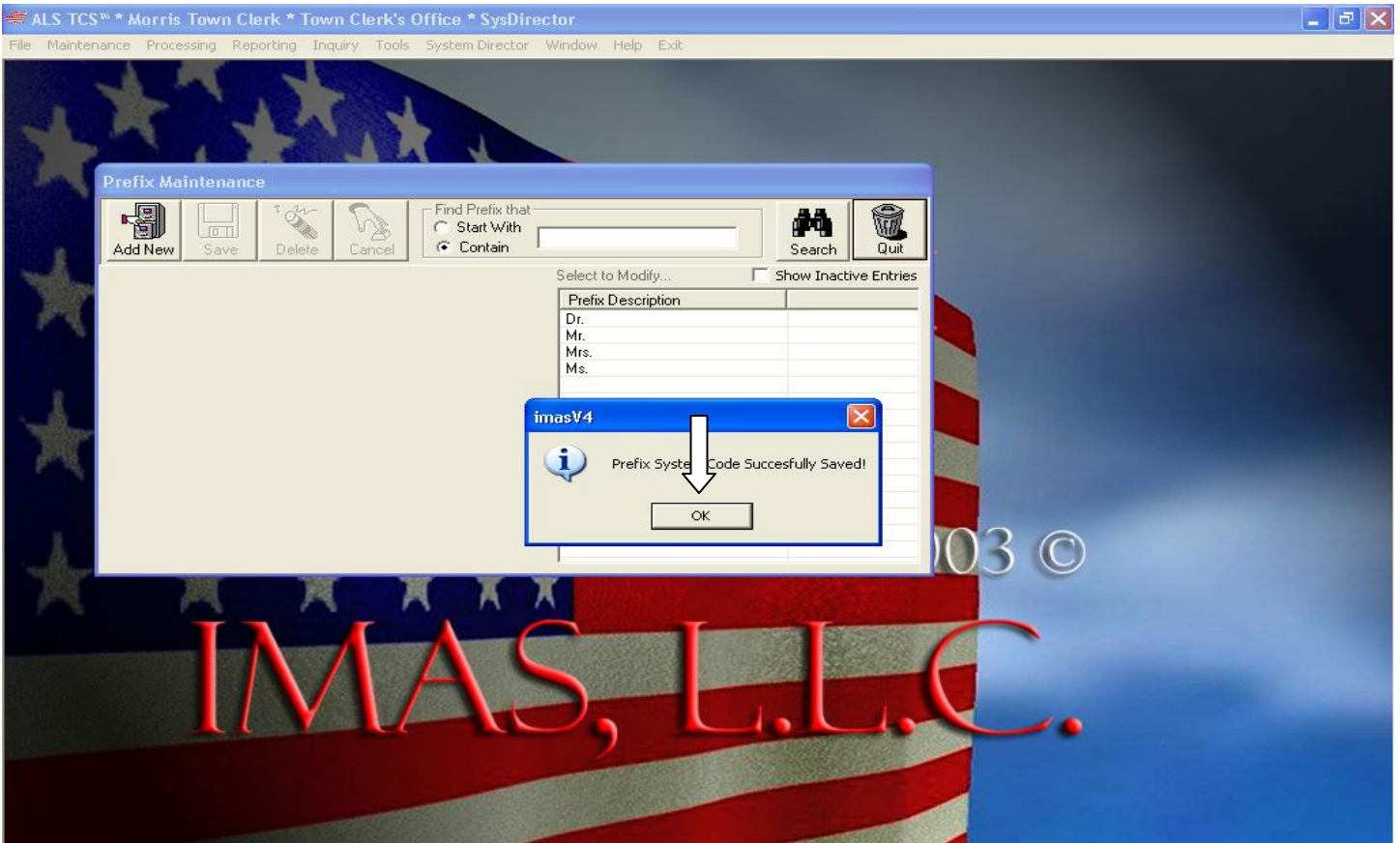
## Version 4.2

### Editing a Prefix



# TCS™-System Director©

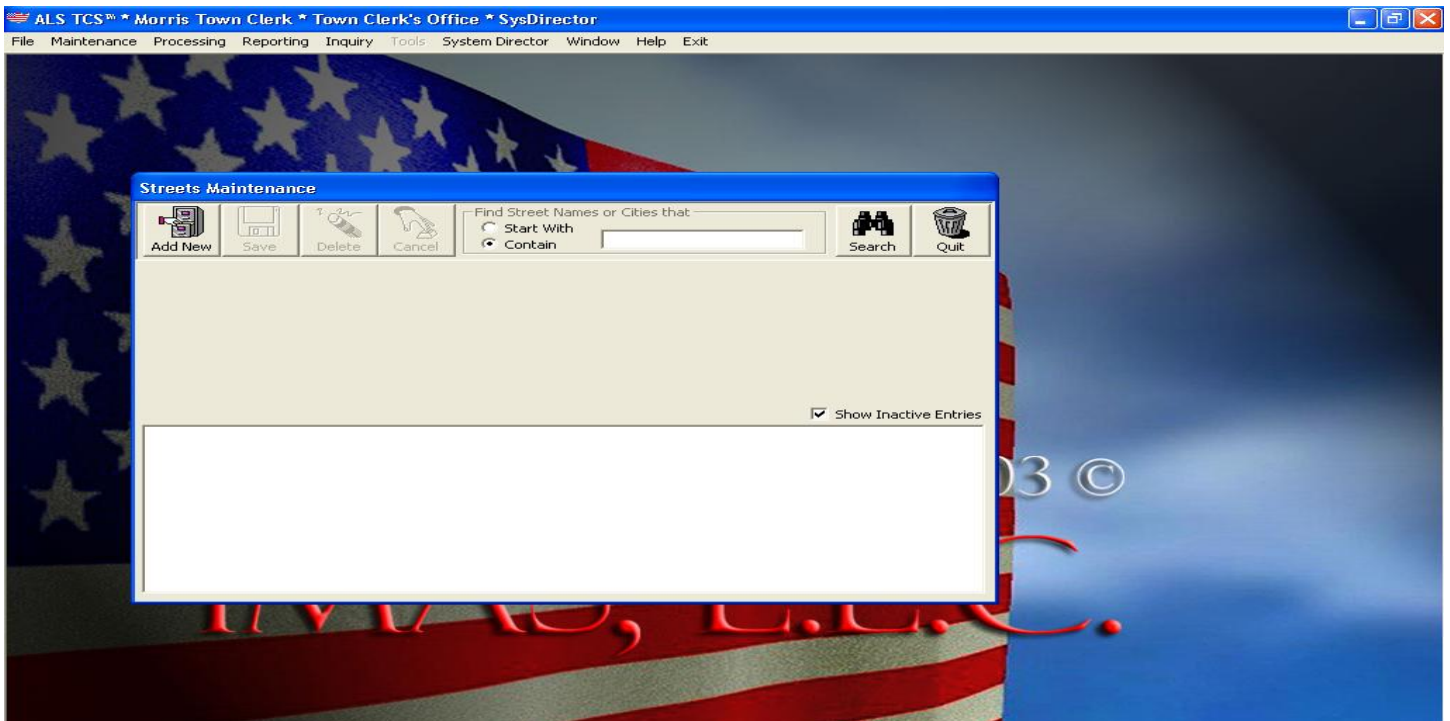
## Version 4.2



# TCS™-System Director©

## Version 4.2

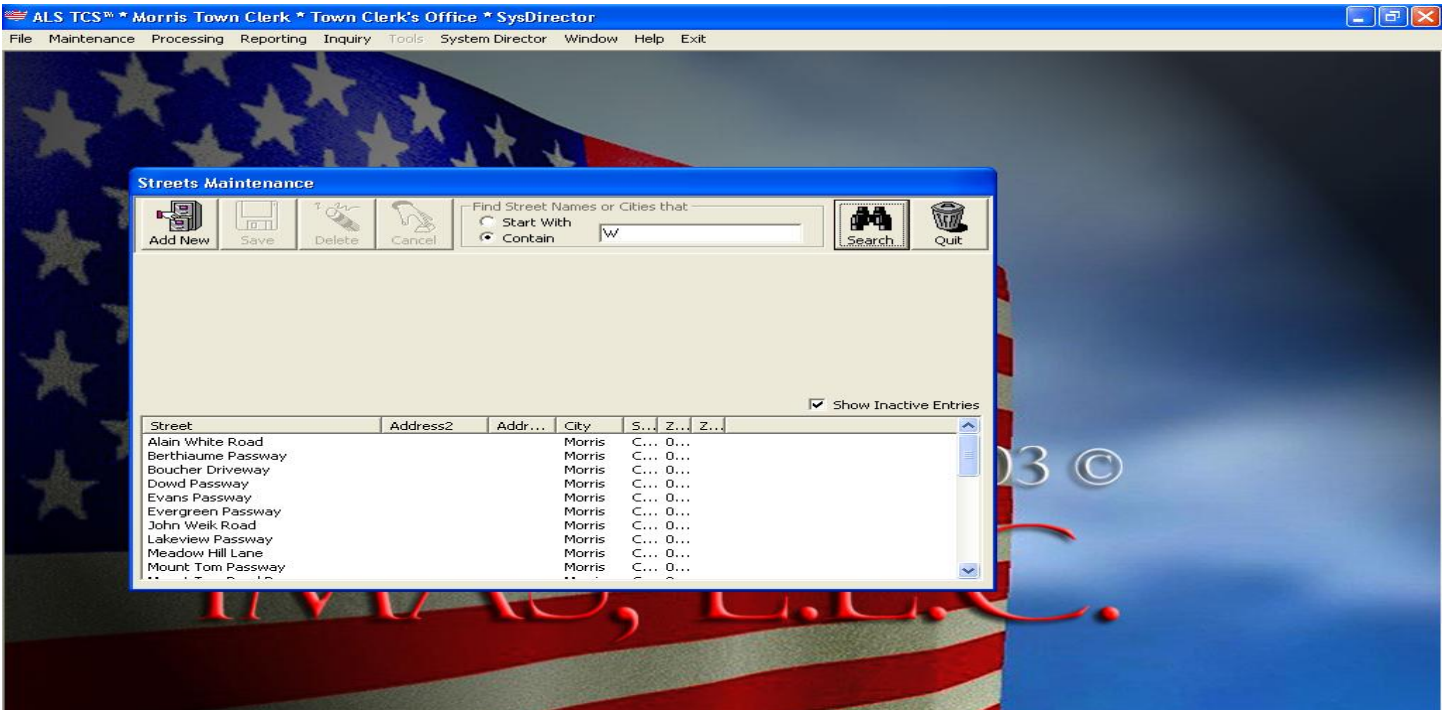
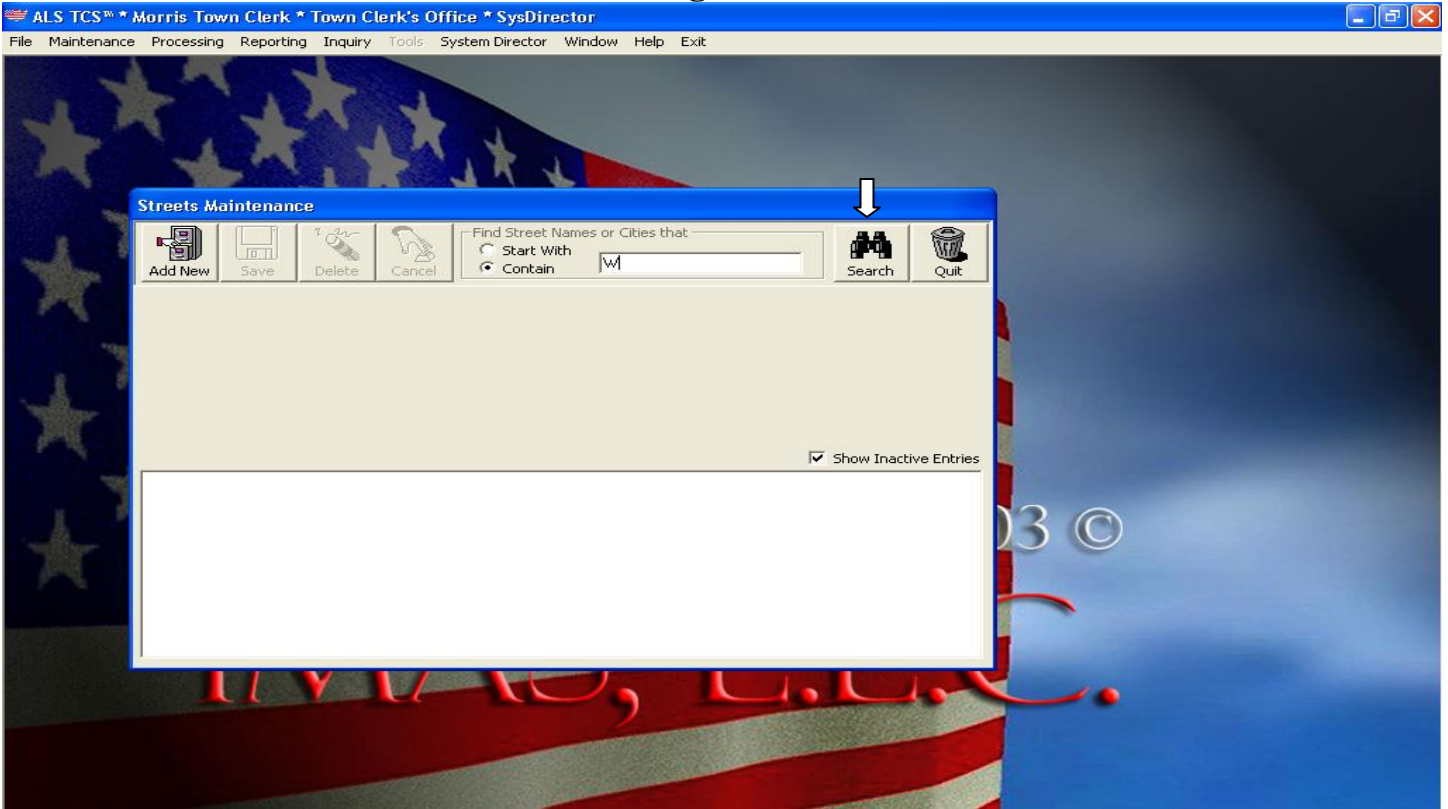
### Street Maintenance:



# TCS™-System Director©

## Version 4.2

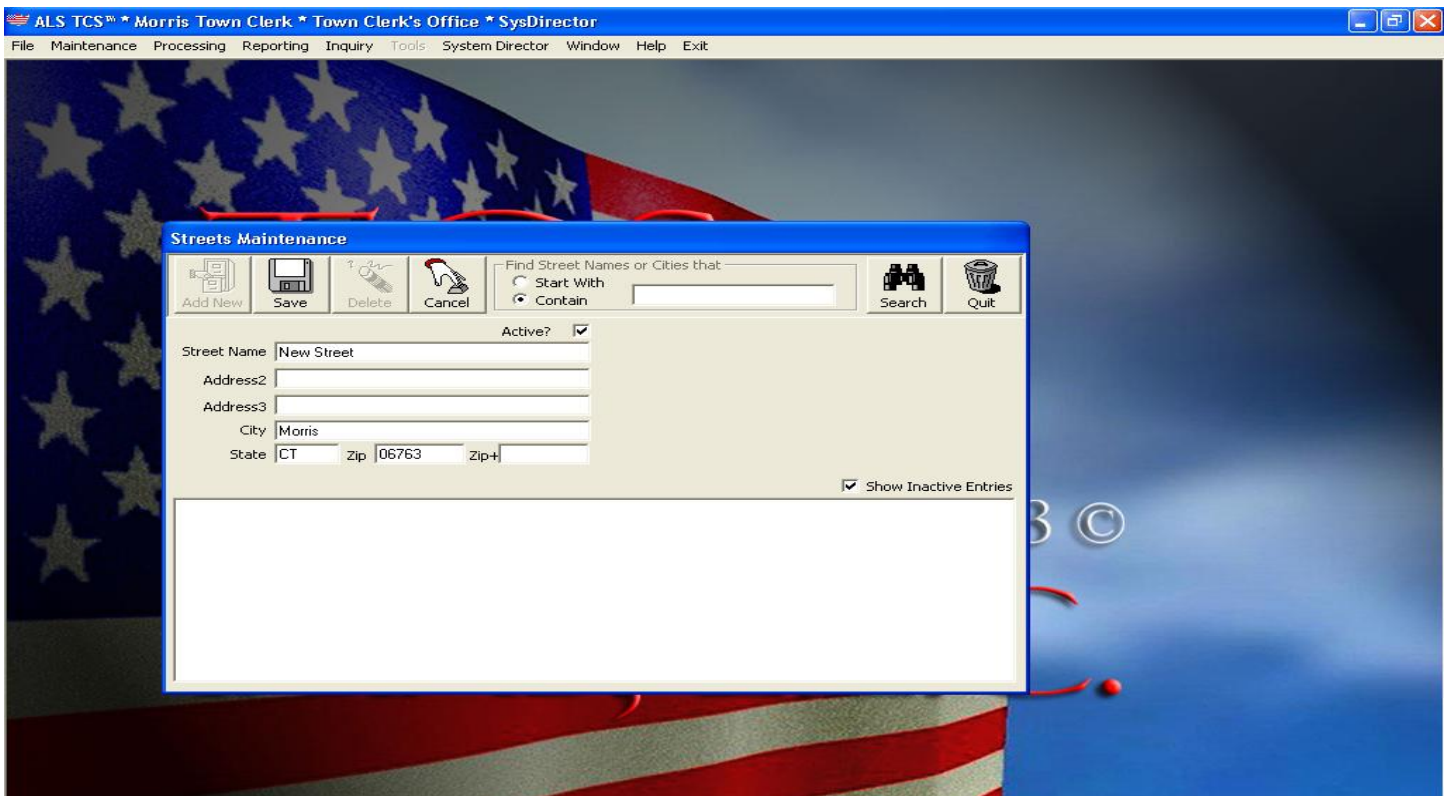
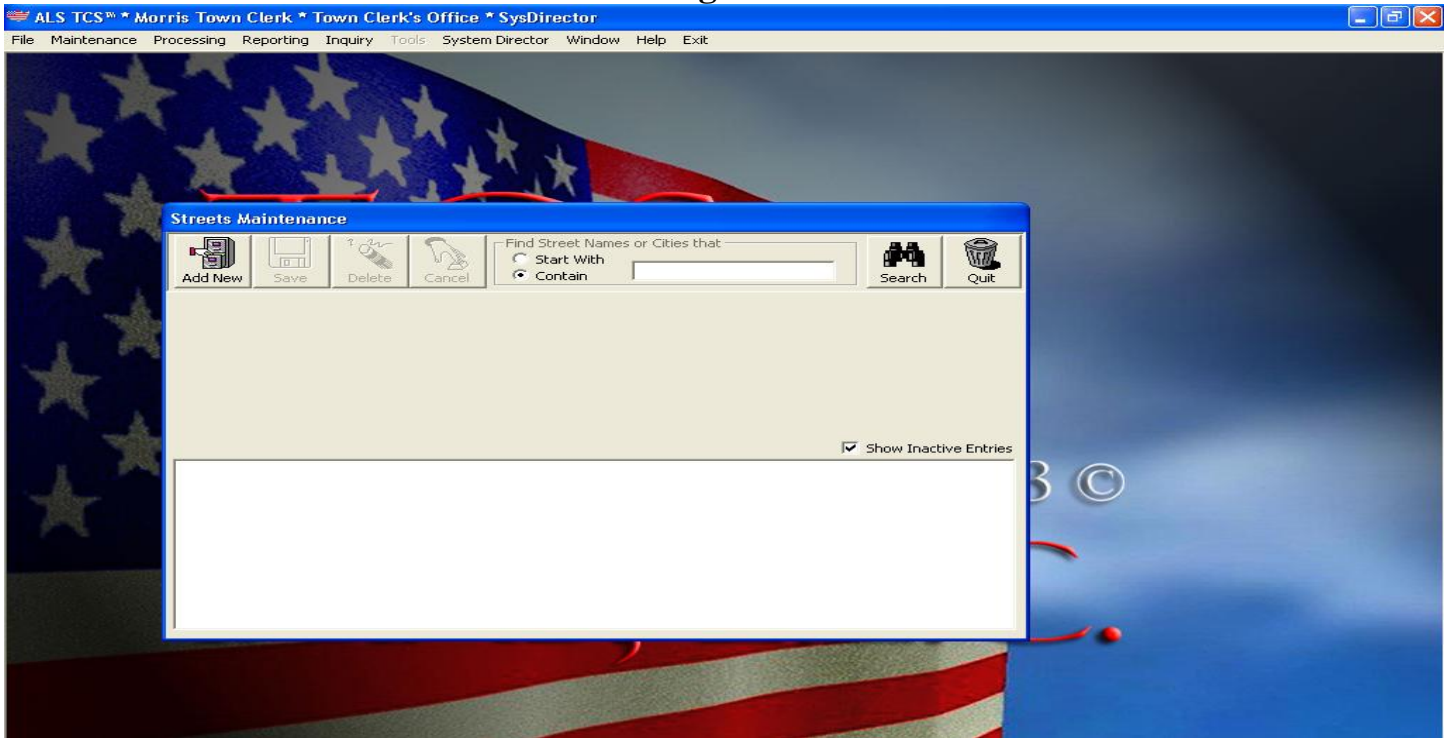
### Searching for a Street



# TCS™-System Director©

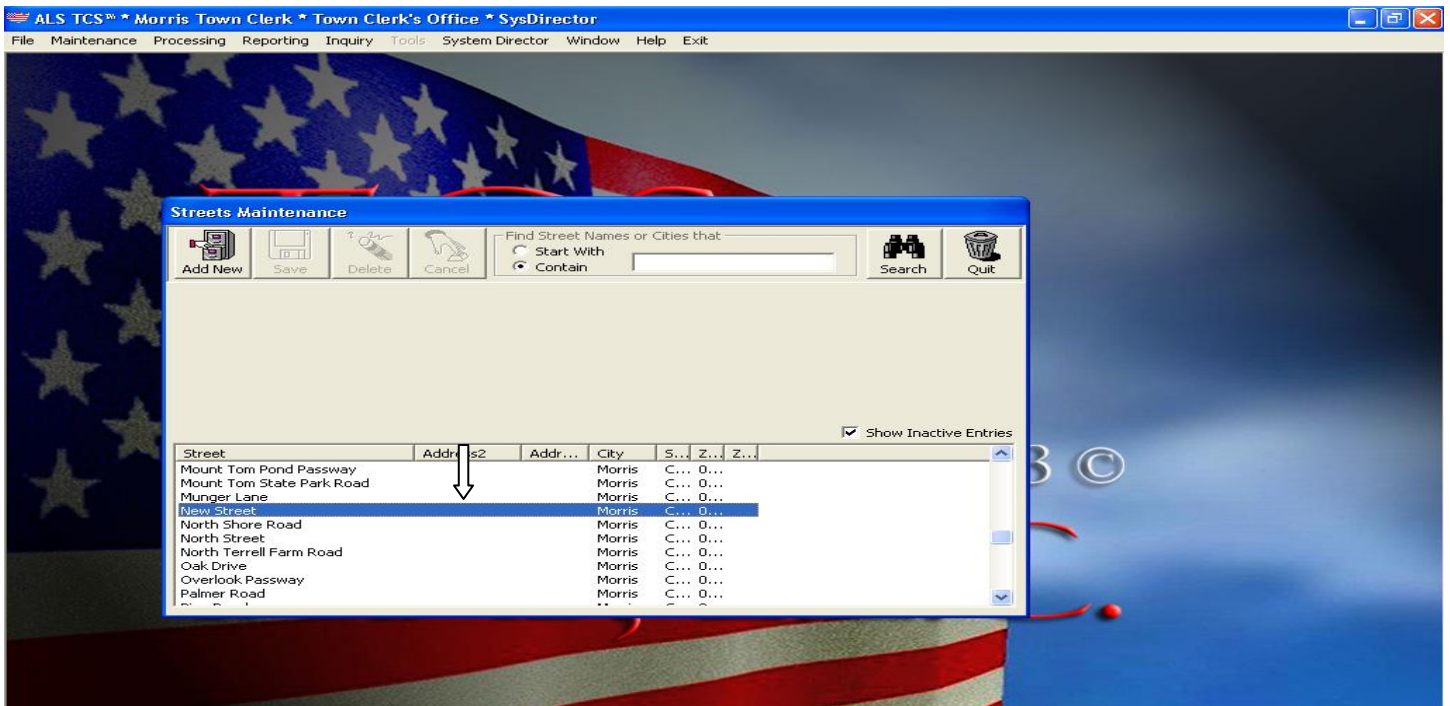
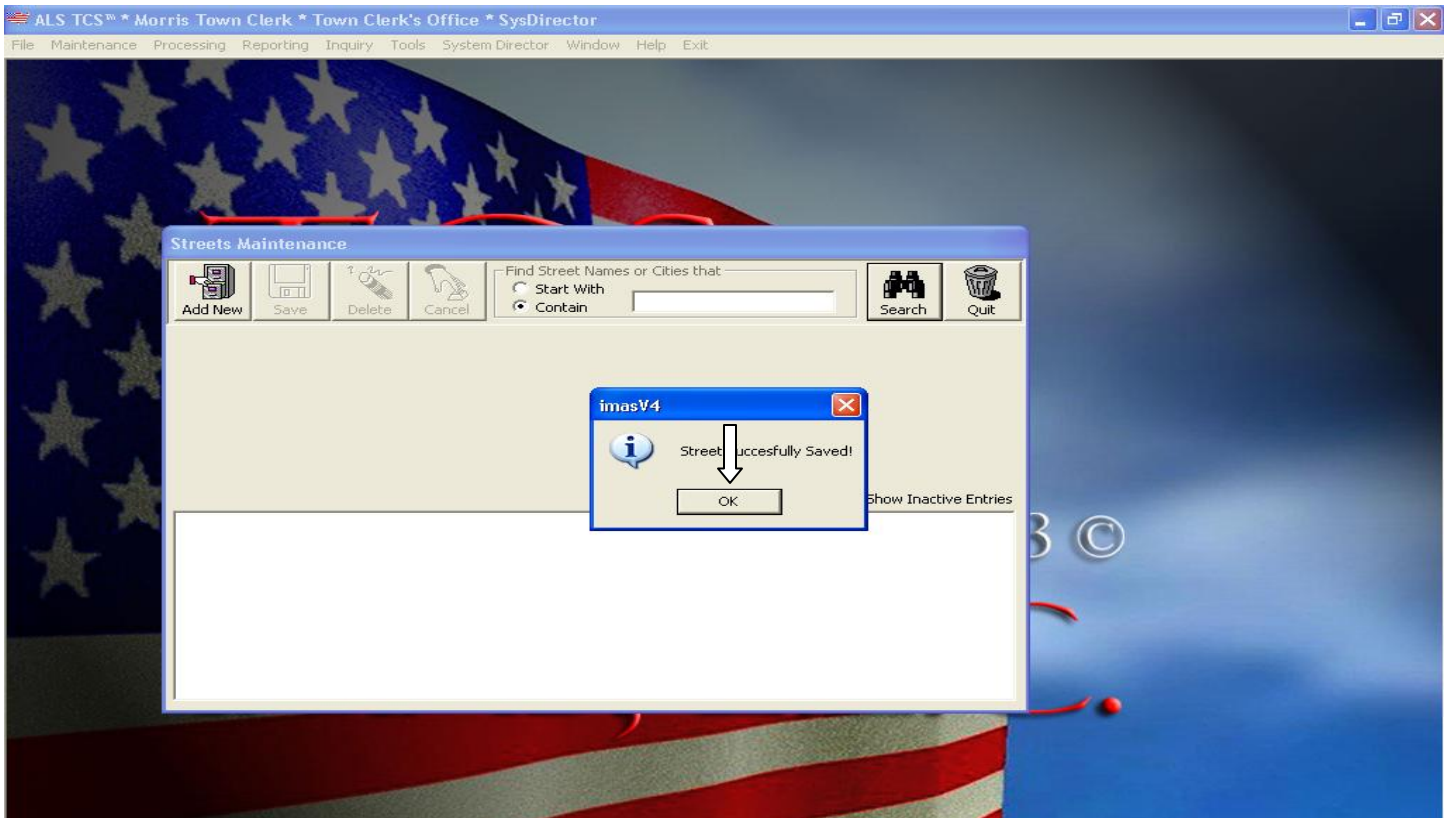
## Version 4.2

### Adding a Street



# TCS™-System Director©

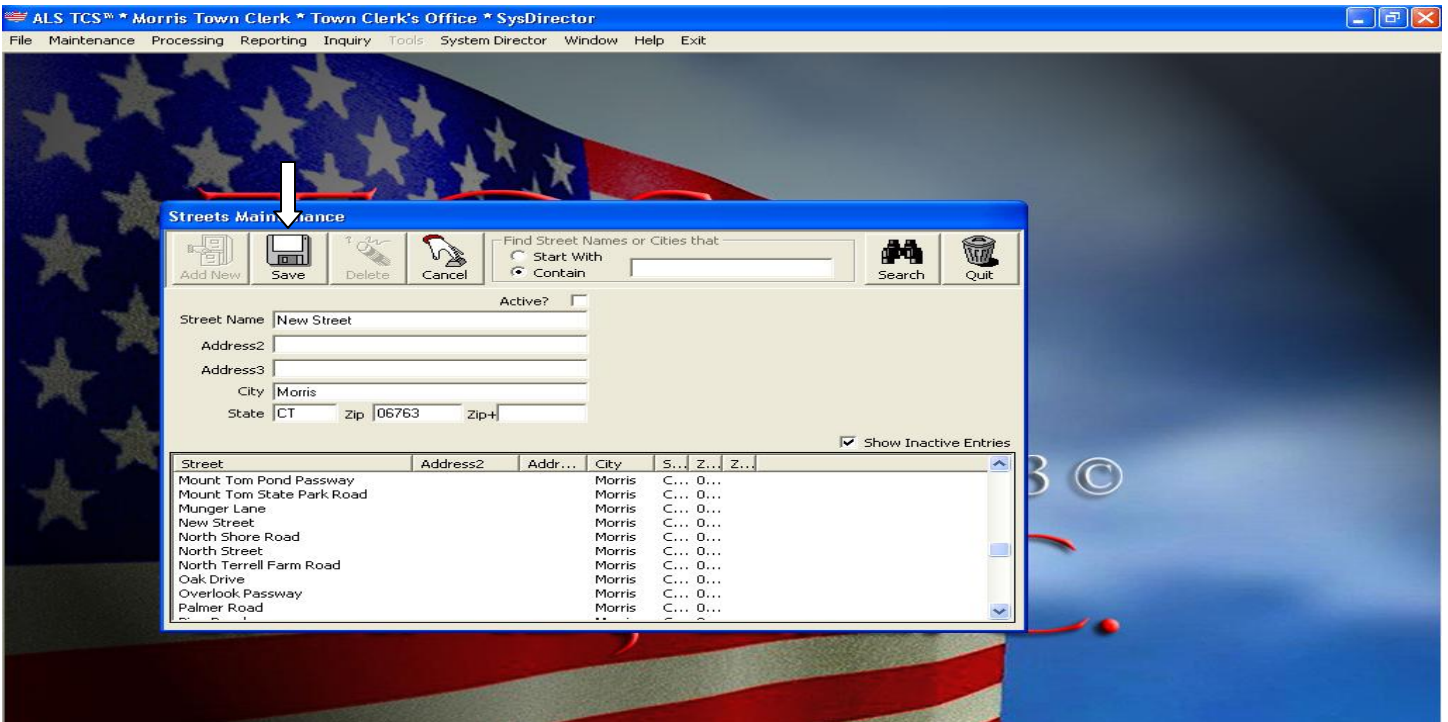
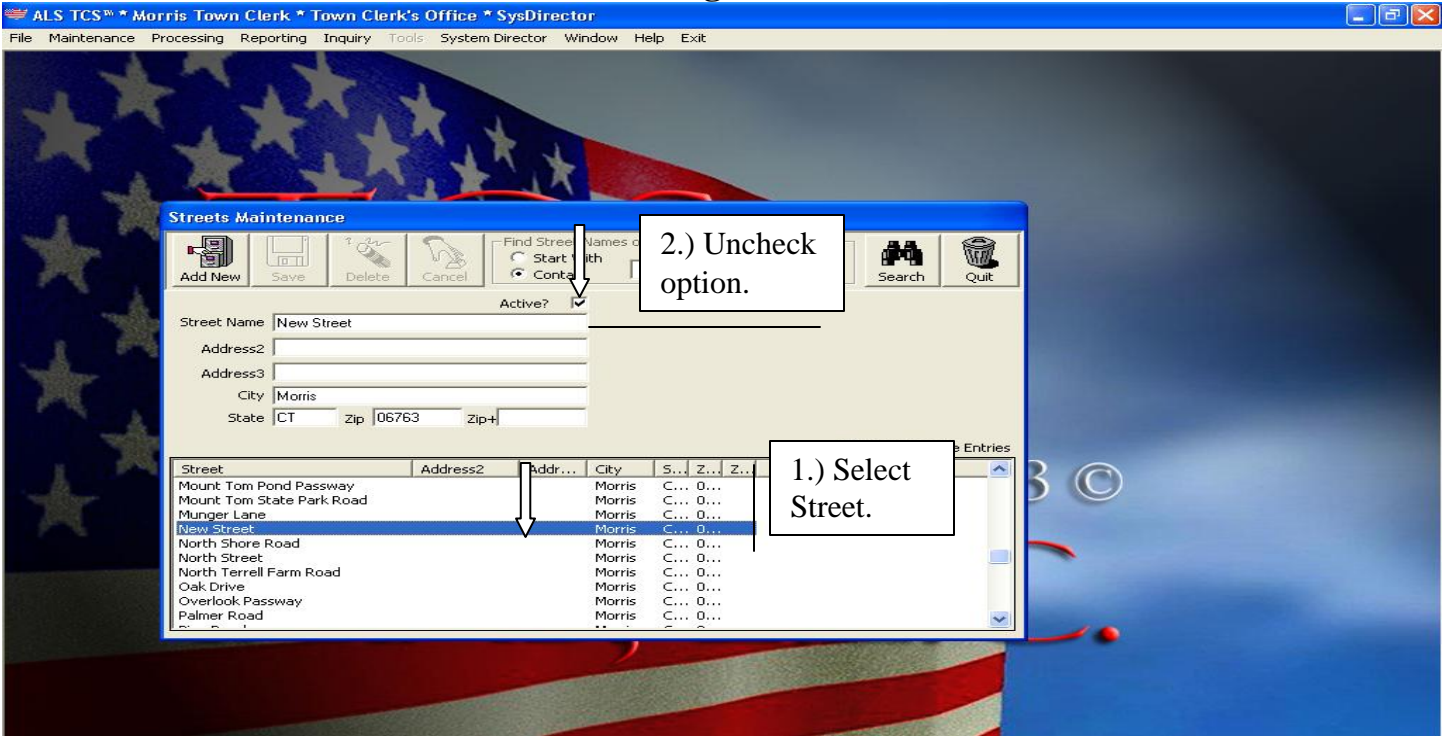
## Version 4.2



# TCS™-System Director©

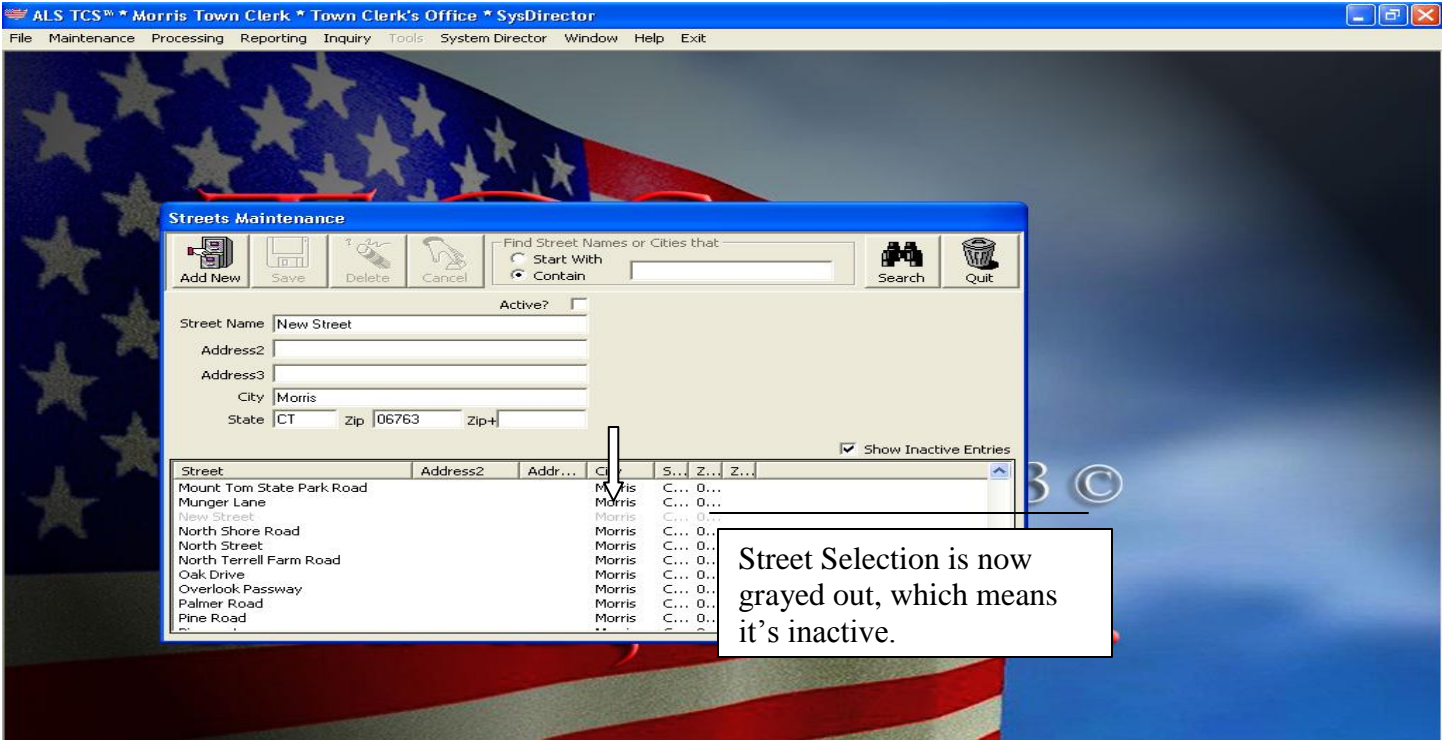
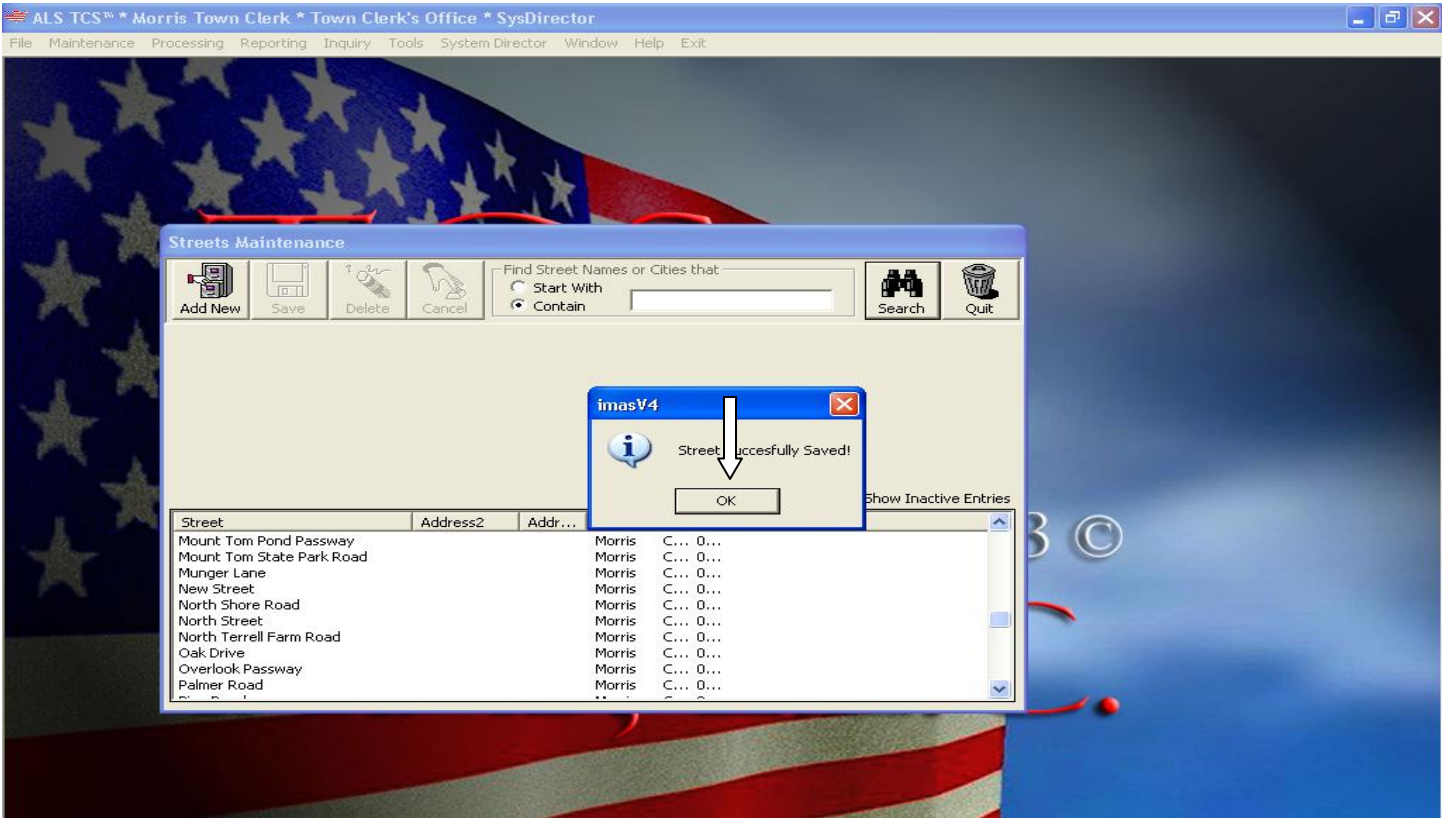
## Version 4.2

### Deleting a Street



# TCS™-System Director©

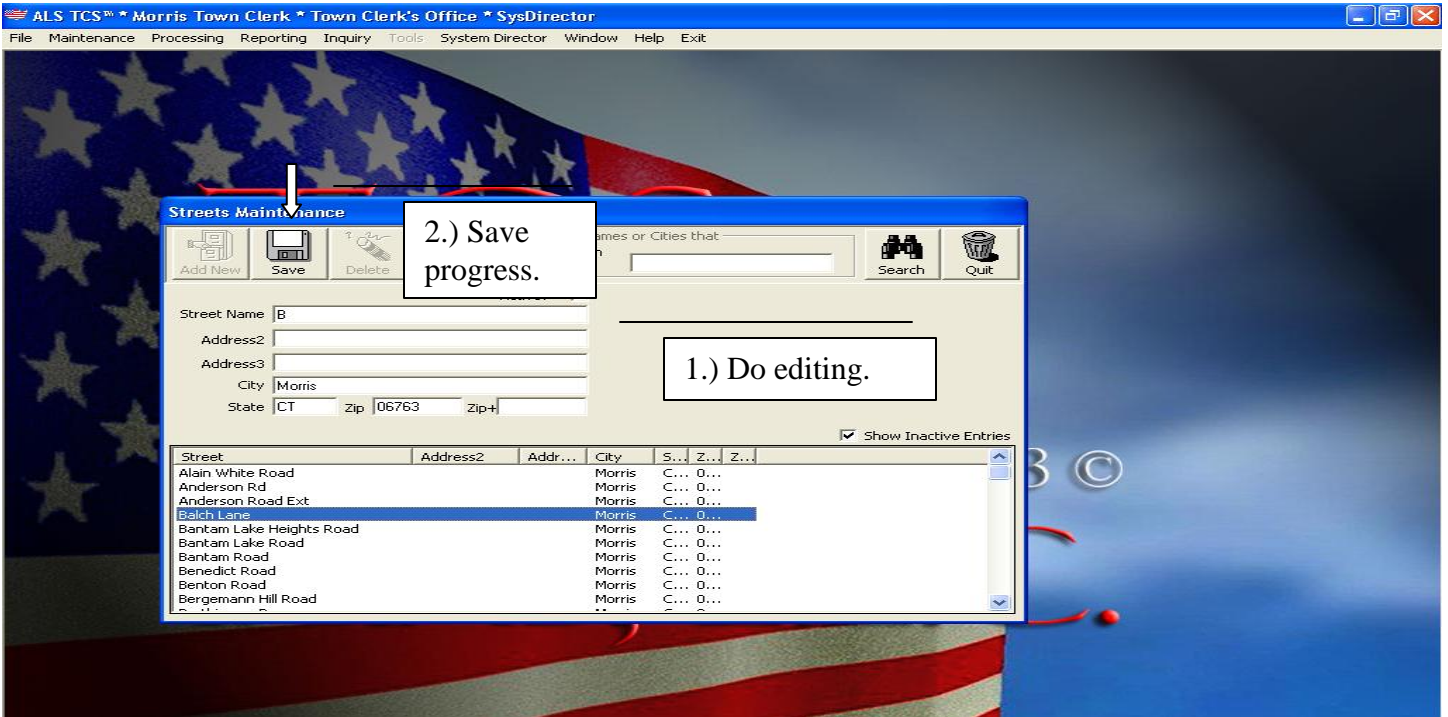
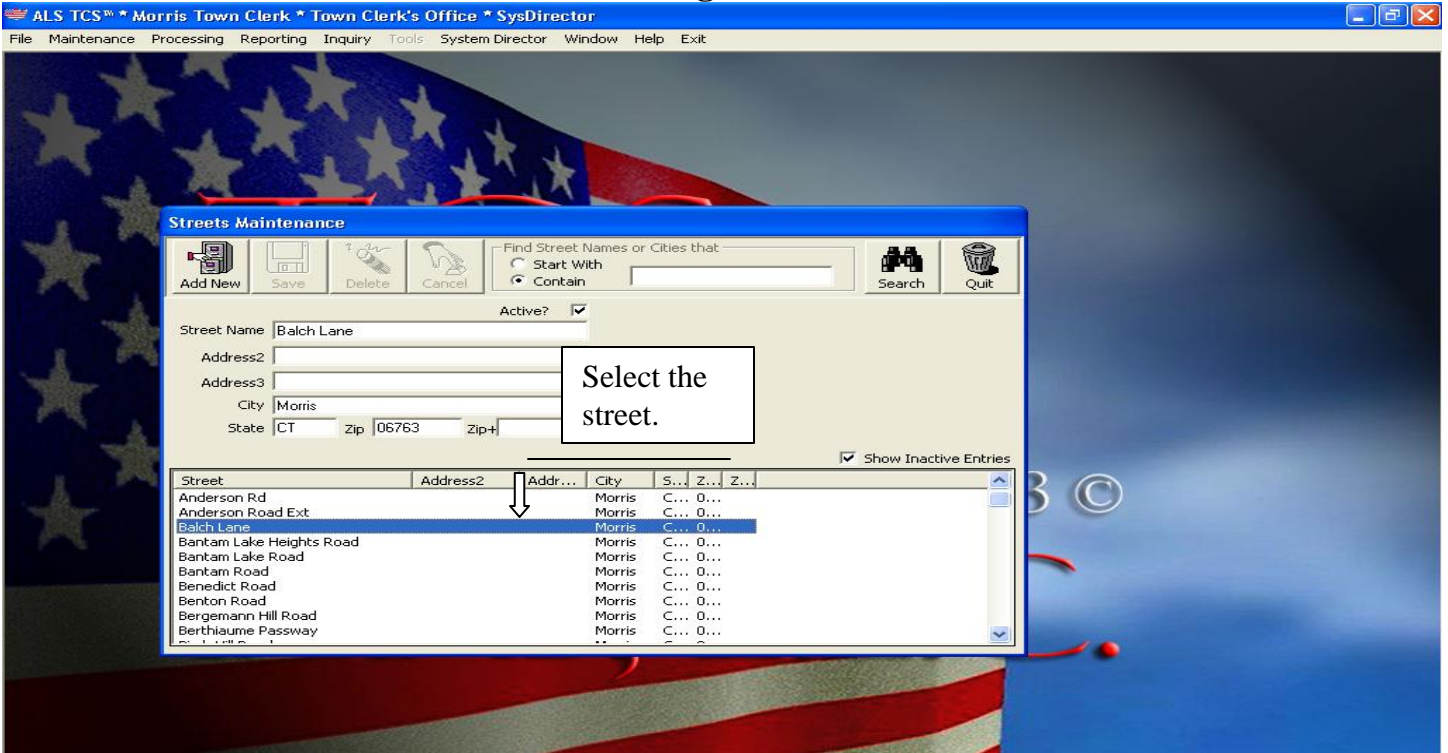
## Version 4.2



# TCS™-System Director©

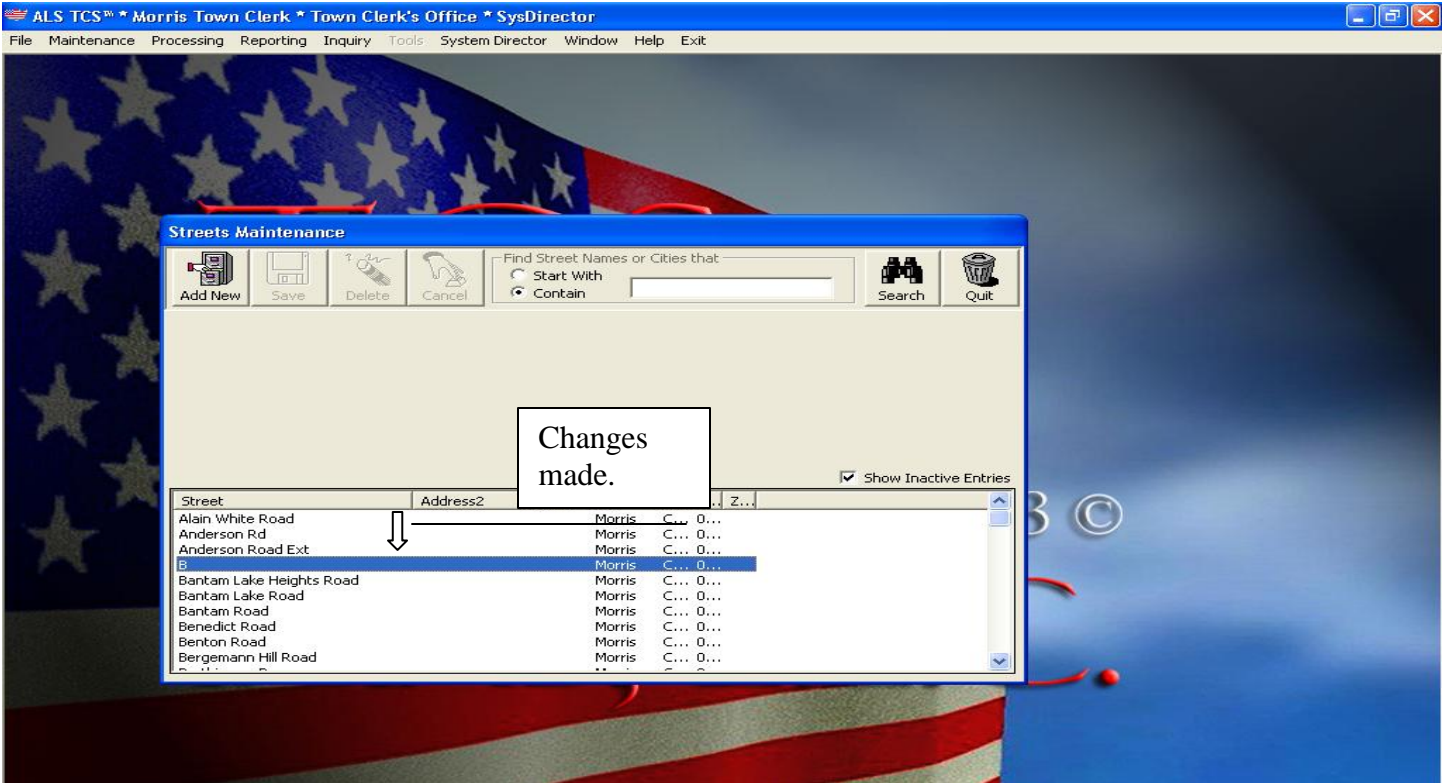
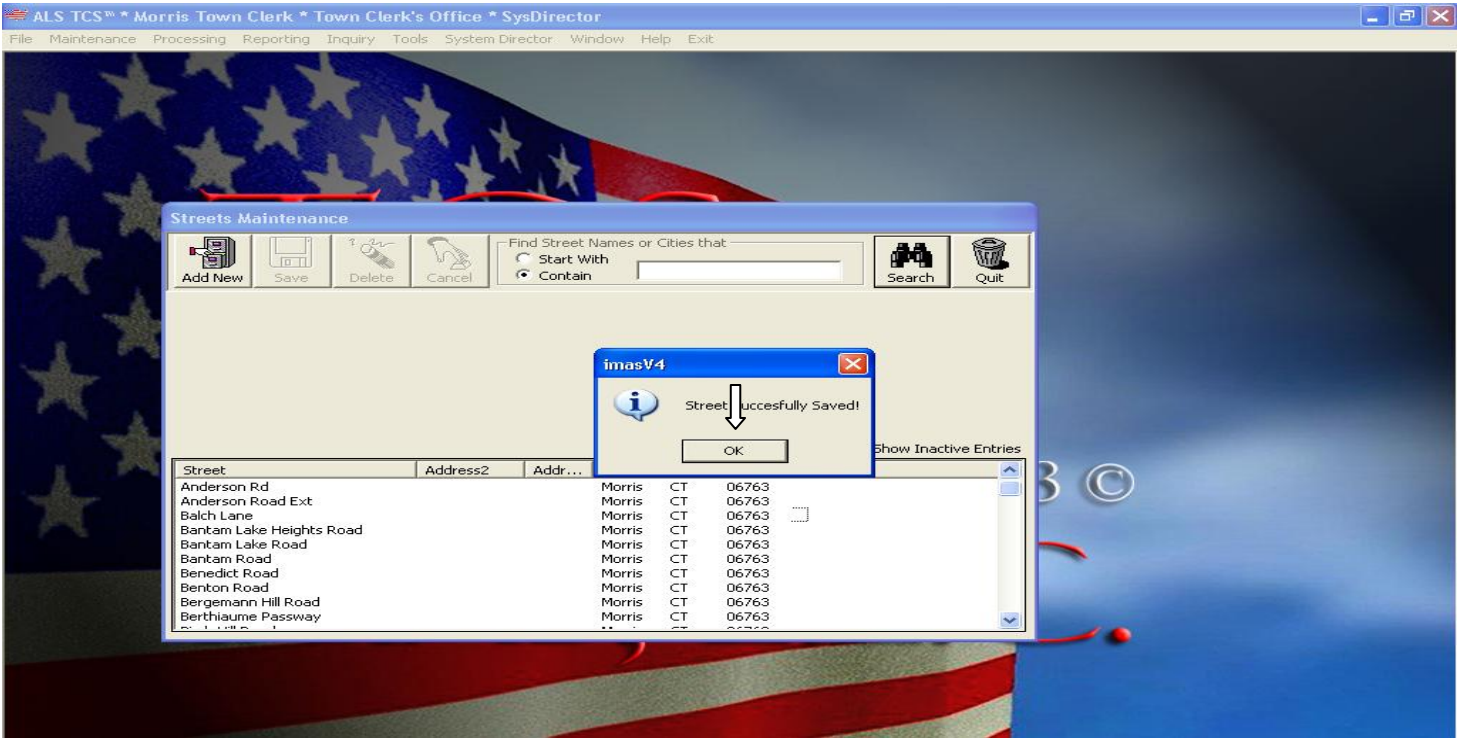
## Version 4.2

### Editing a Street



# TCS™-System Director©

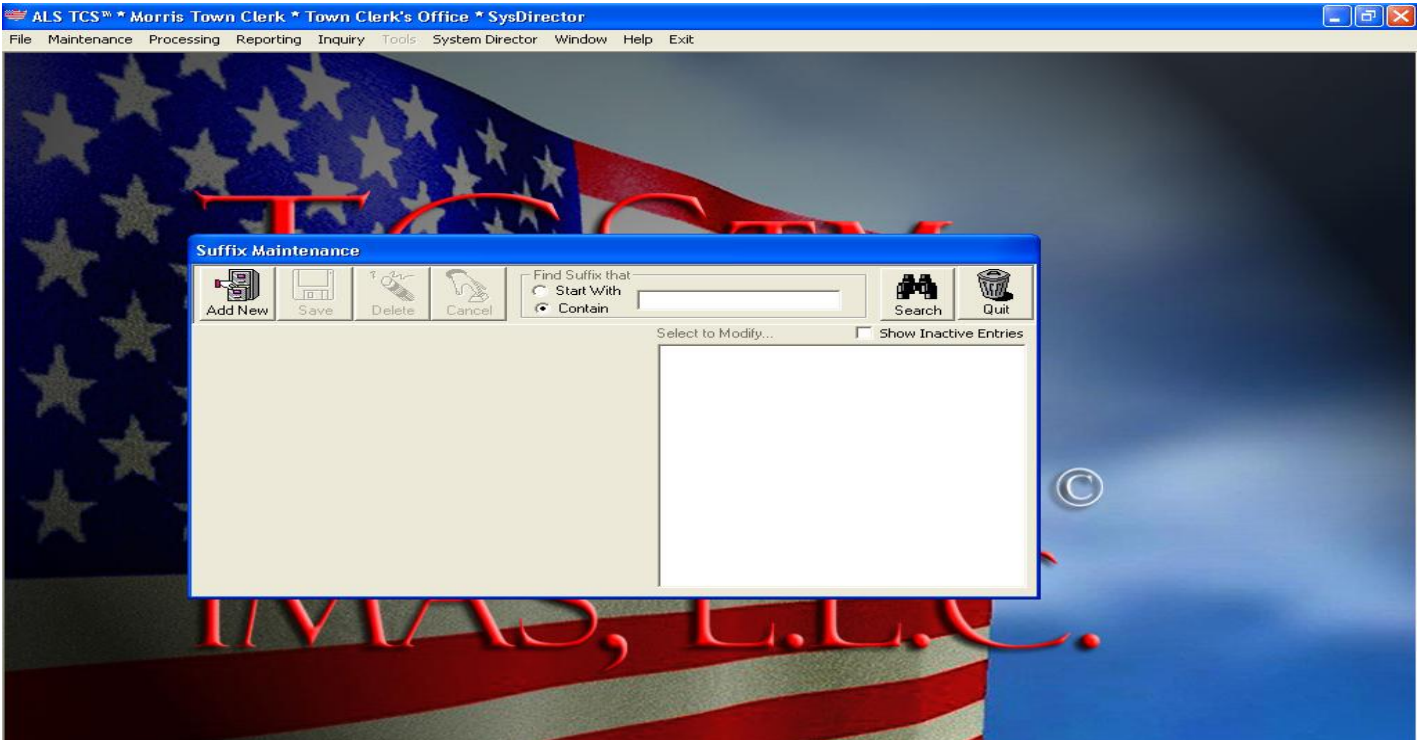
## Version 4.2



# TCS™-System Director©

## Version 4.2

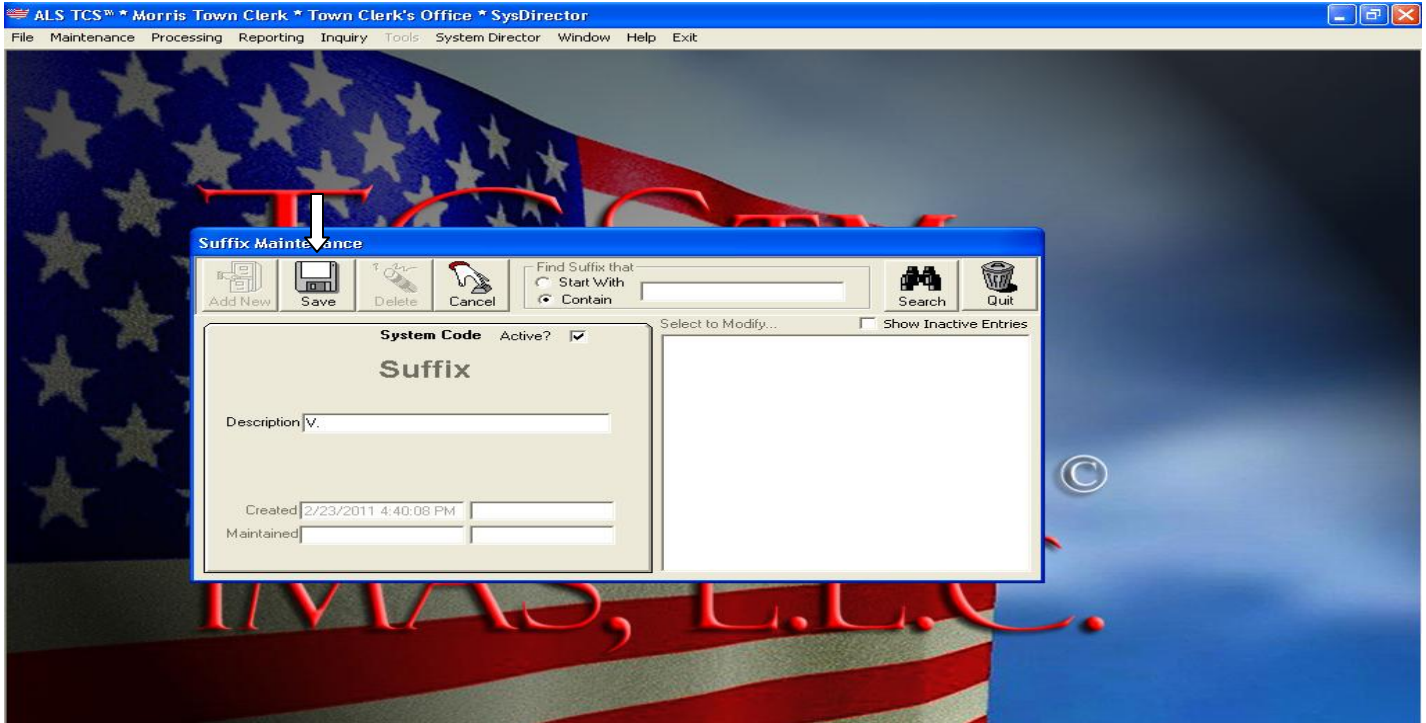
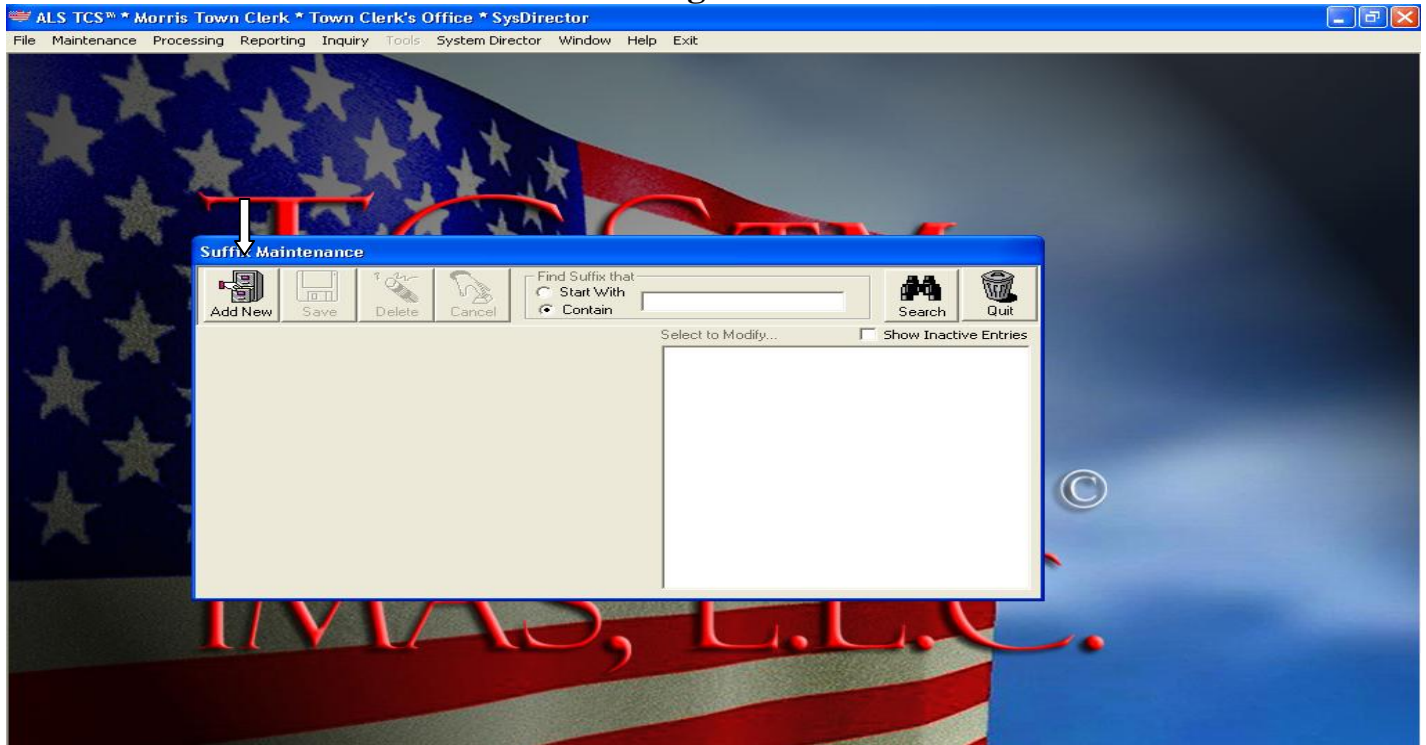
### Suffix Maintenance:



# TCS™-System Director©

## Version 4.2

### Adding a Suffix

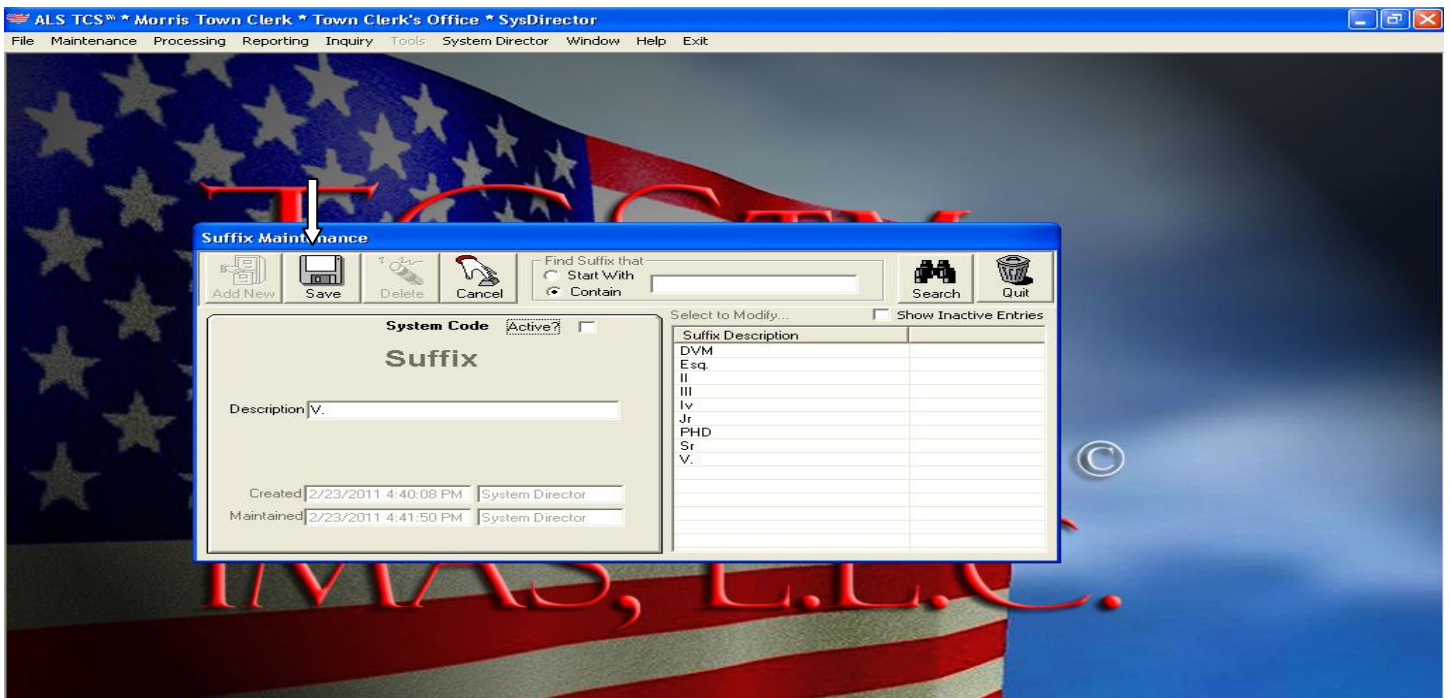
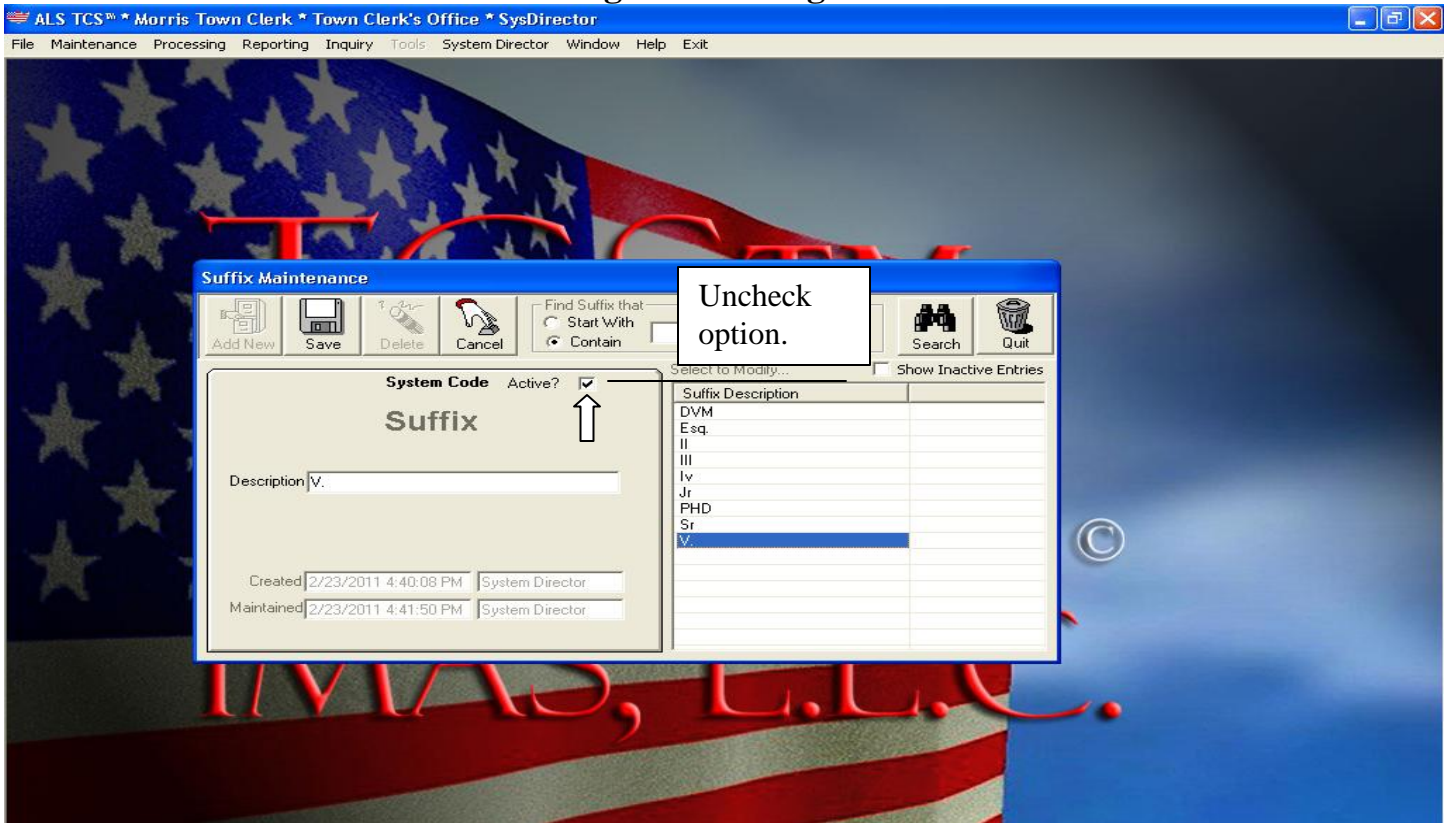




# TCS™-System Director©

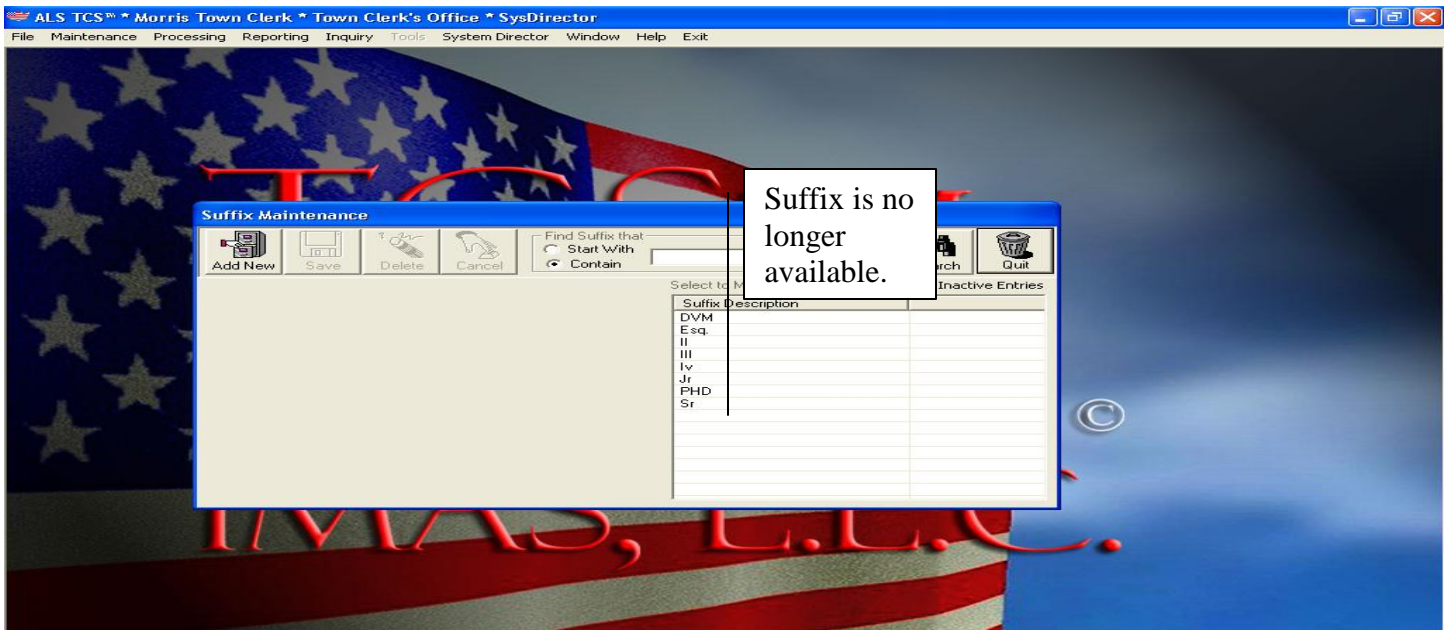
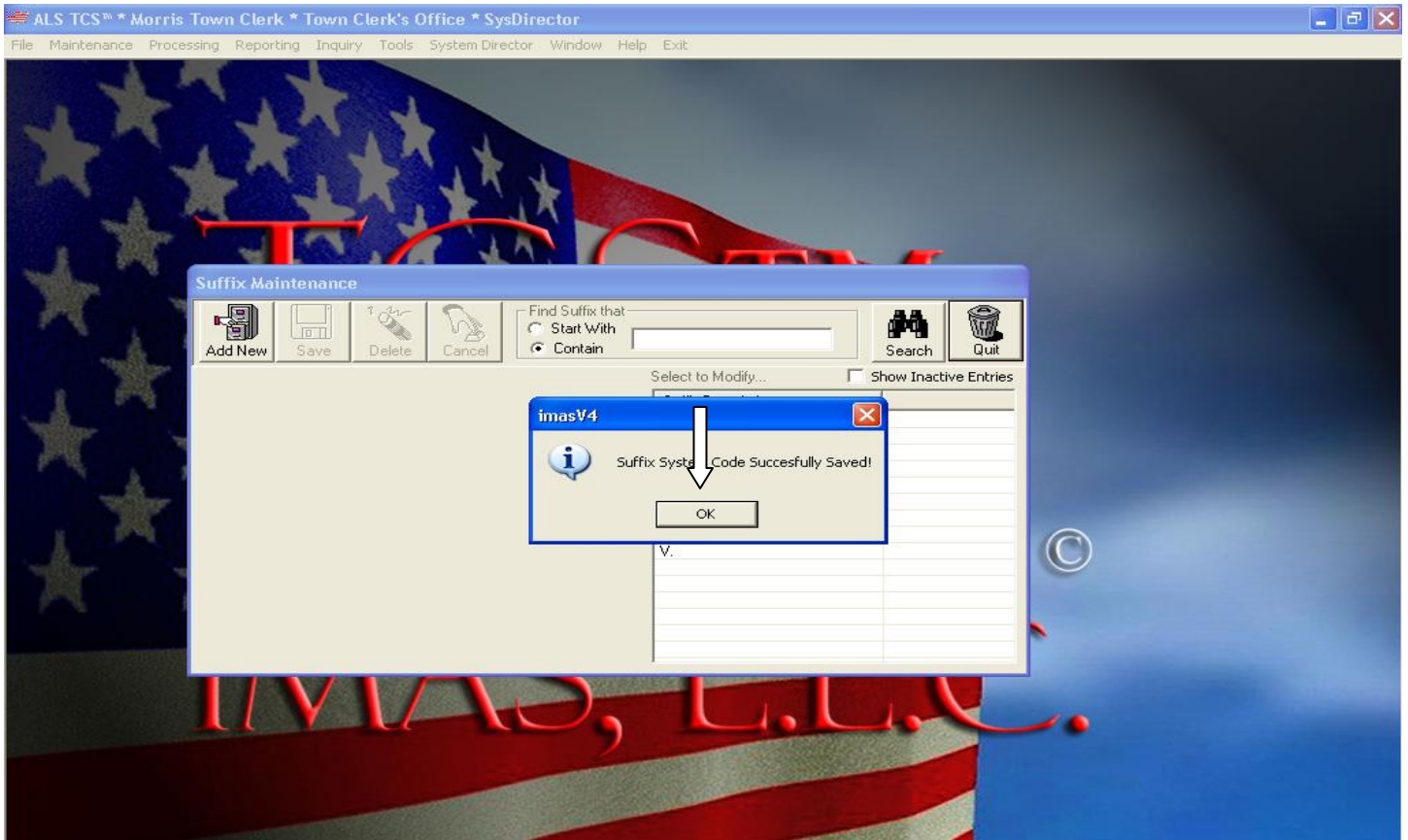
## Version 4.2

### Deleting/Inactivating a Suffix



# TCS™-System Director©

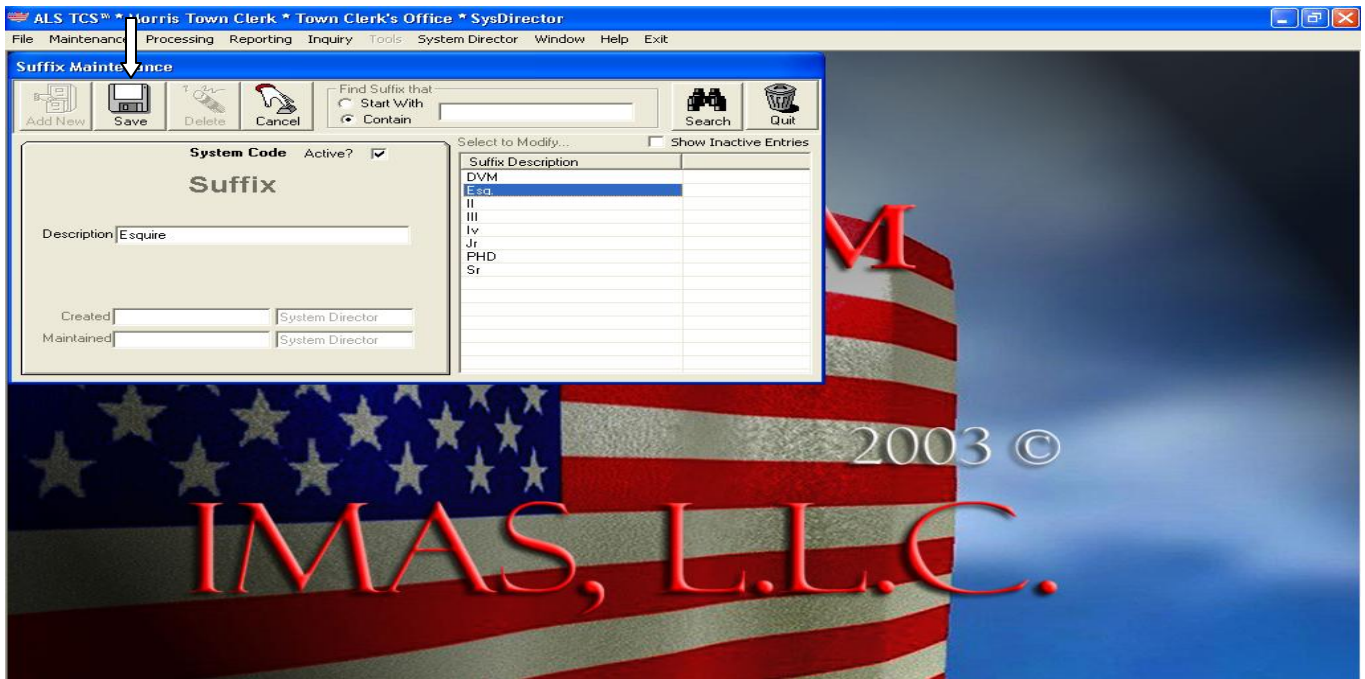
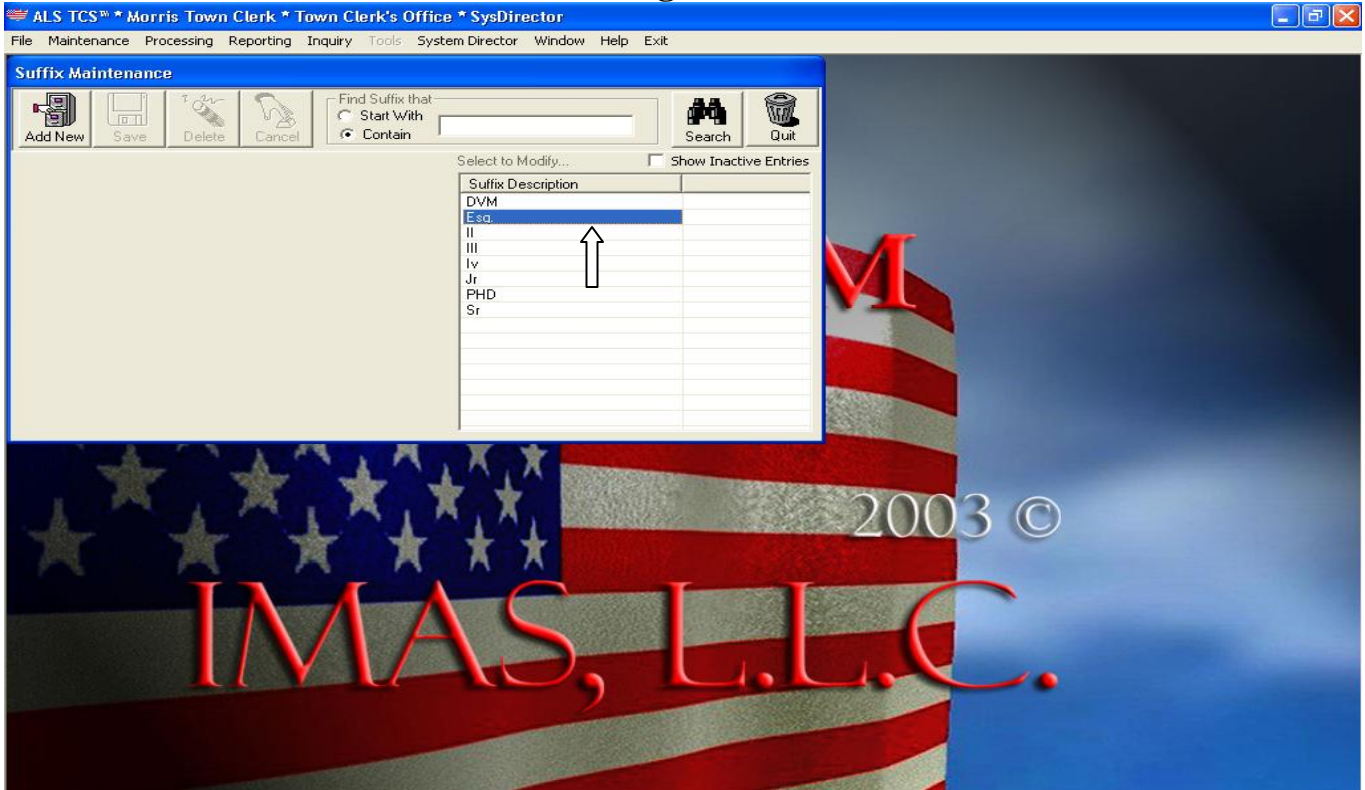
## Version 4.2



# TCS™-System Director©

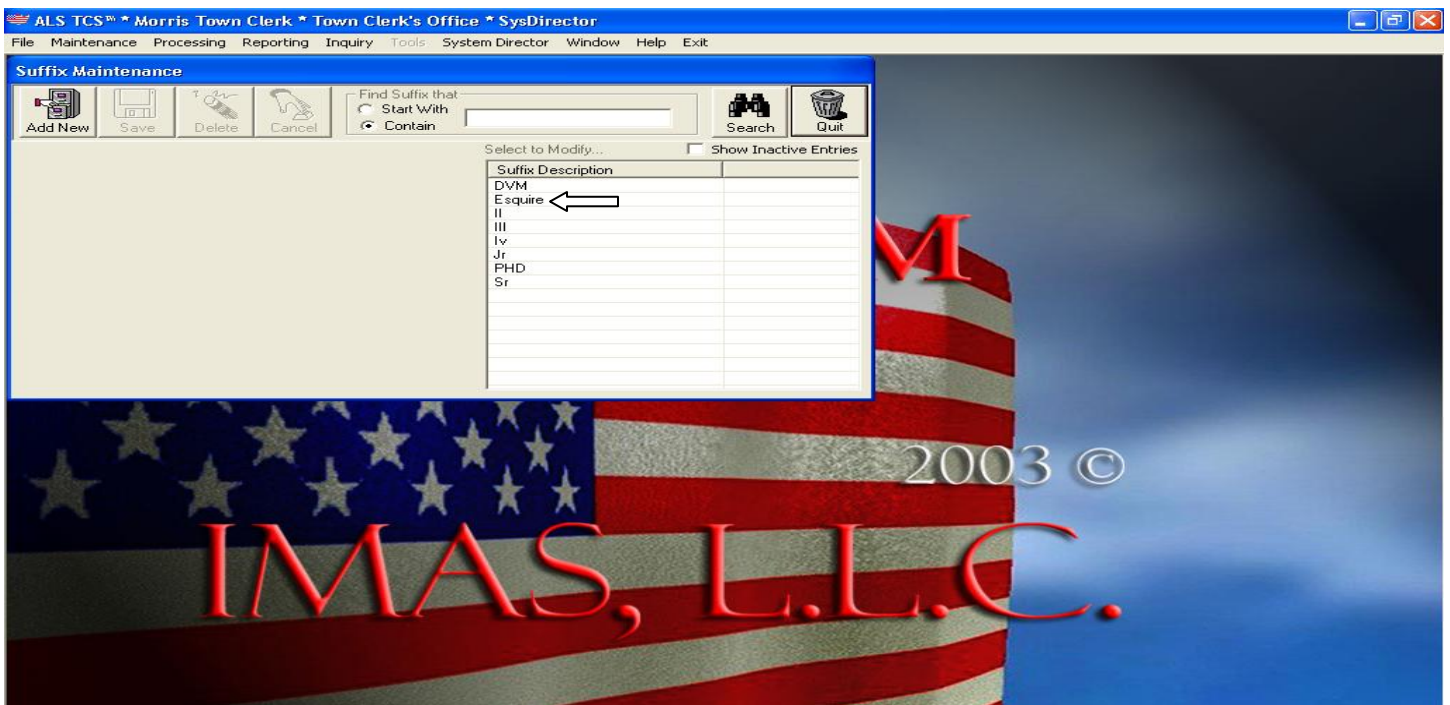
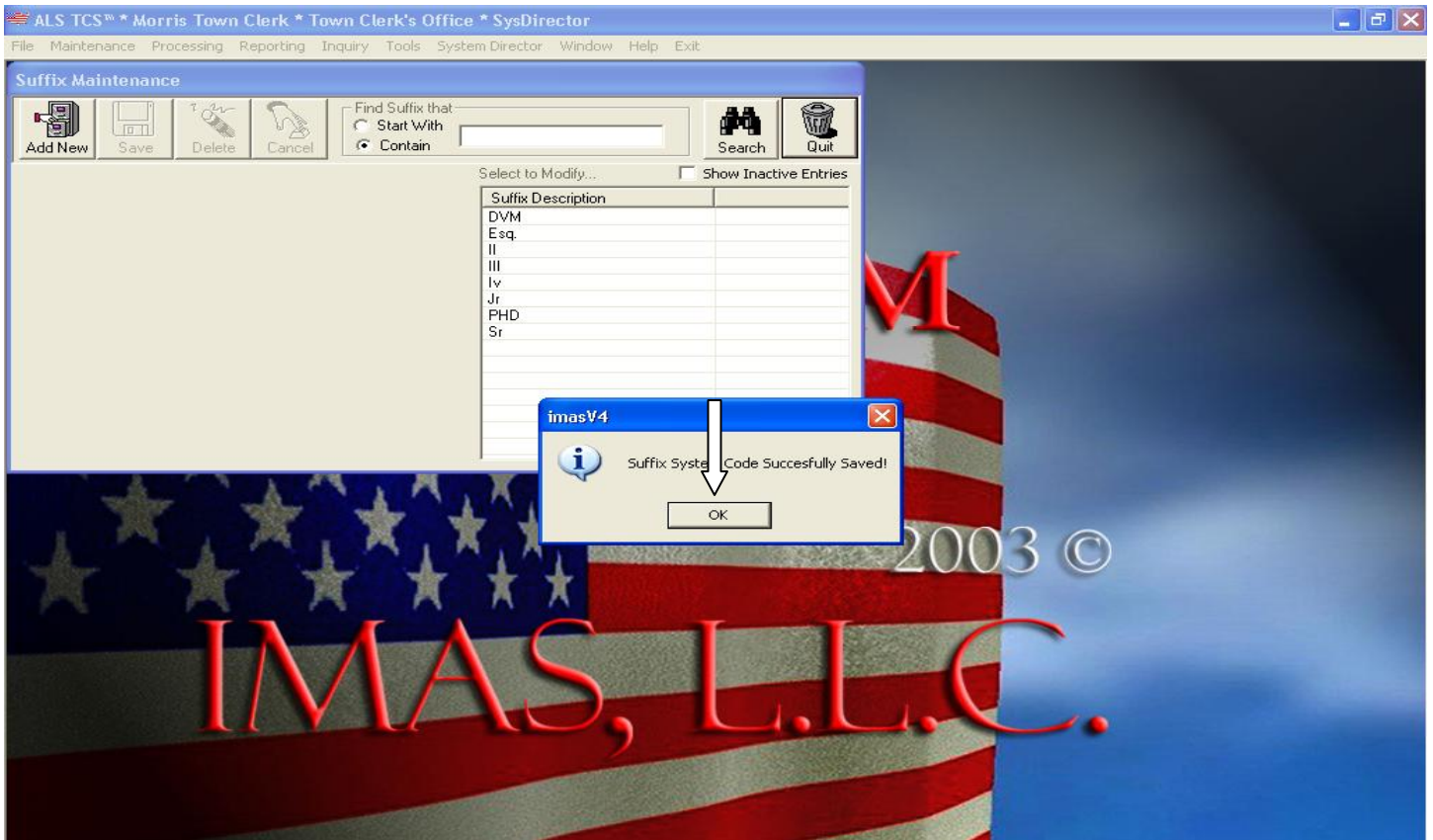
## Version 4.2

### Editing a Suffix



# TCS™-System Director©

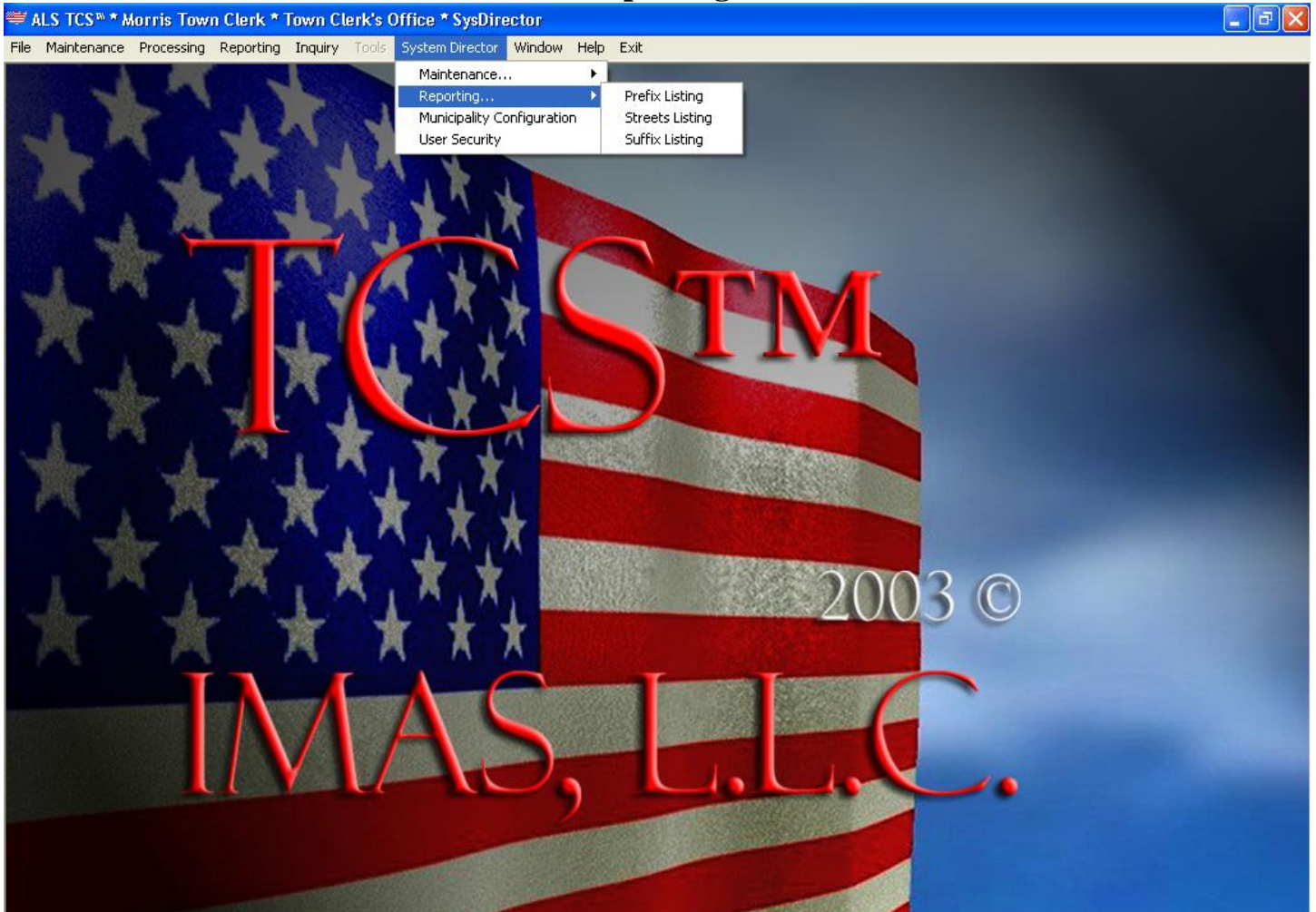
## Version 4.2



# TCS™-System Director©

## Version 4.2

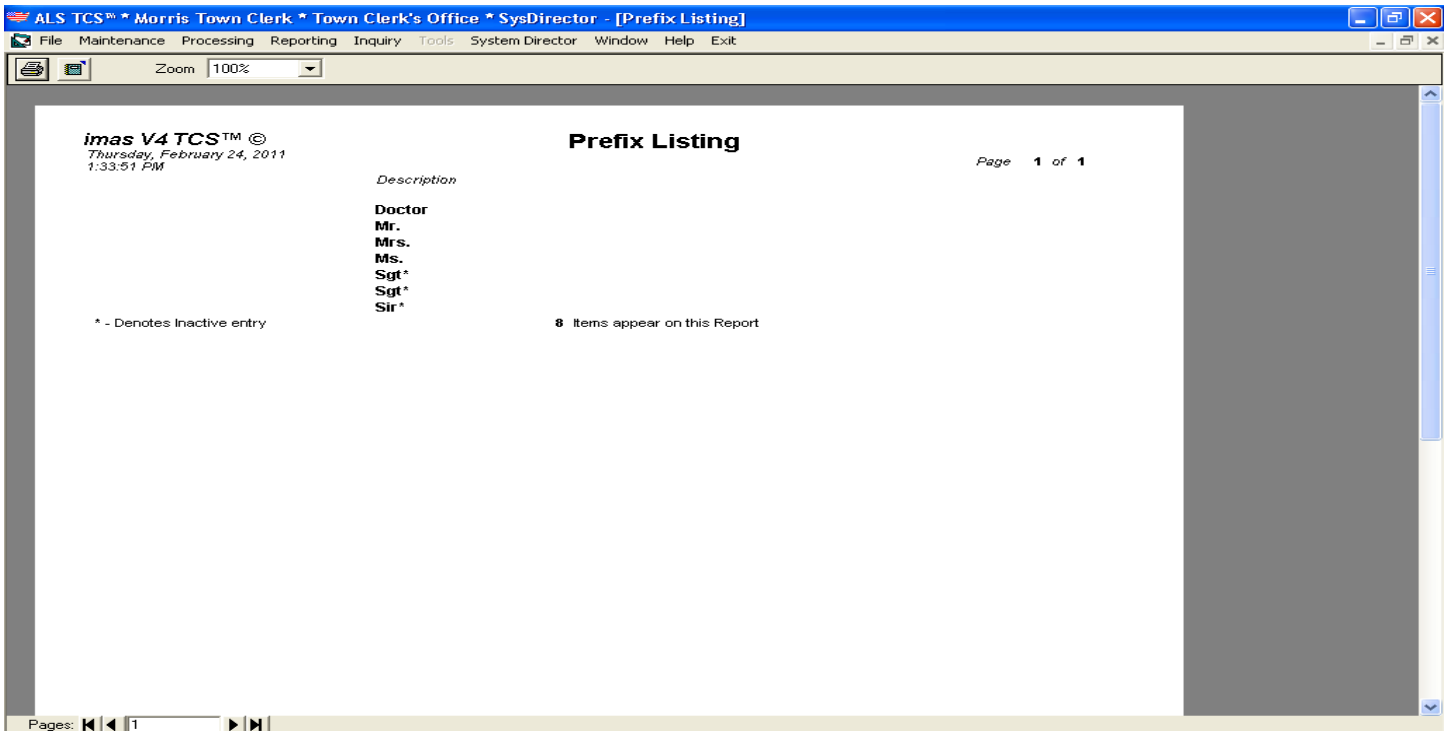
### Reporting



# TCS™-System Director©

## Version 4.2

### Prefix Listing:



# TCS™-System Director©

## Version 4.2

### Street Listing:



ALS TCS™ \* Morris Town Clerk \* Town Clerk's Office \* SysDirector - [ALS - drSysStreets (DataReport)]

File Maintenance Processing Reporting Inquiry Tools System Director Window Help Exit

Zoom 100%

**imas V4 TCS™ ©**  
Thursday, February 24, 2011  
1:39:07 PM

### Streets Listing

Page 1 of 2

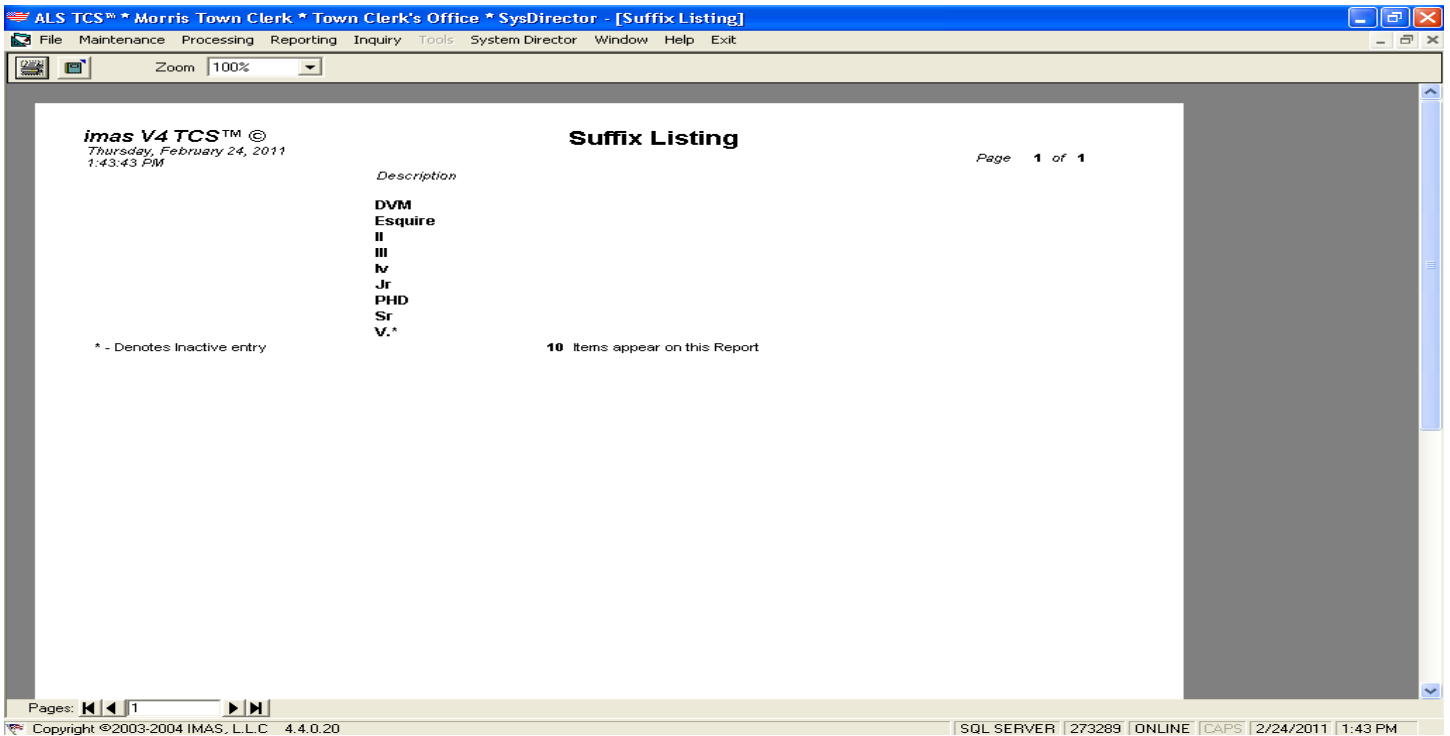
StreetName	City	State	Zip	Zip+	Address2	Address3
Alain White Road	Morris	CT	06763			
Anderson Rd	Morris	CT	06763			
Anderson Road Ext B	Morris	CT	06763			
Bantam Lake Heights Road	Morris	CT	06763			
Bantam Lake Road	Morris	CT	06763			
Bantam Road	Morris	CT	06763			
Benedict Road	Morris	CT	06763			
Benton Road	Morris	CT	06763			
Bergemann Hill Road	Morris	CT	06763			
Berthiaume Passway	Morris	CT	06763			
Birch Hill Road	Morris	CT	06763			
Boucher Driveway	Morris	CT	06763			
Breezy Knoll Road	Morris	CT	06763			
Brunetto Grove	Morris	CT	06763			
Burgess Road	Morris	CT	06763			
County Road	Morris	CT	06763			
Curtiss Hill Road	Morris	CT	06763			
Deer Lane	Morris	CT	06763			
Dowd Passway	Morris	CT	06763			
East Morris Lane	Morris	CT	06763			
East Shore Road	Morris	CT	06763			
East Street	Morris	CT	06763			
Esthers Lane	Morris	CT	06763			
Esthers Lane Ext	Morris	CT	06763			
Evans Passway	Morris	CT	06763			
Evergreen Passway	Morris	CT	06763			
Farnham Road	Morris	CT	06763			
Harrison Lane	Morris	CT	06763			
Hickory Hill Road	Morris	CT	06763			

Pages: 1

# TCS™-System Director©

## Version 4.2

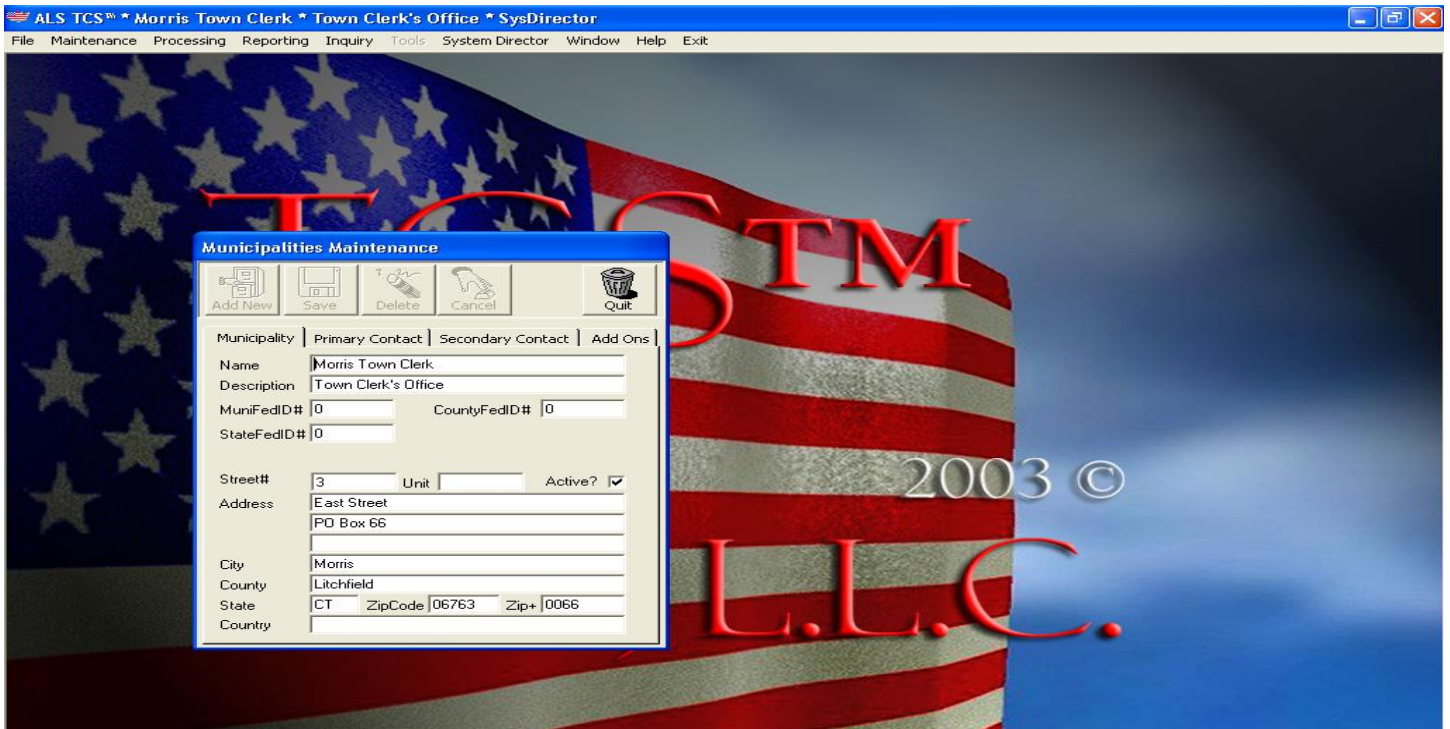
### Suffix Listing:



# TCS™-System Director©

## Version 4.2

### Municipality Configuration:



# TCS™-System Director©

## Version 4.2



# TCS™-System Director©

## Version 4.2

ALS TCS™ \* Morris Town Clerk \* Town Clerk's Office \* SysDirector

File Maintenance Processing Reporting Inquiry Tools System Director Window Help Exit

**Municipalities Maintenance**

Add New Save Delete Cancel Quit

Municipality Primary Contact Secondary Contact Add Ons

Name Ann Carr  
 Title Town Clerk  
 Phone 8605677433 Ext. 0  
 eMail morristc7433@optonline.net  
 Fax 0

Clerk Name Ann E. Carr  
 Town Hall Tel# 8605677433

2003 ©

ALS TCS™ \* Morris Town Clerk \* Town Clerk's Office \* SysDirector

File Maintenance Processing Reporting Inquiry Tools System Director Window Help Exit

**Municipalities Maintenance**

Add New Save Delete Cancel Quit

Municipality Primary Contact Secondary Contact Add Ons

Name Morris Town Clerk  
 Description Town Clerk's Office  
 MuniFedID# 0 CountyFedID# 0  
 StateFedID# 0

Street# 3 Unit Active?   
 Address East Street  
 PO Box 66

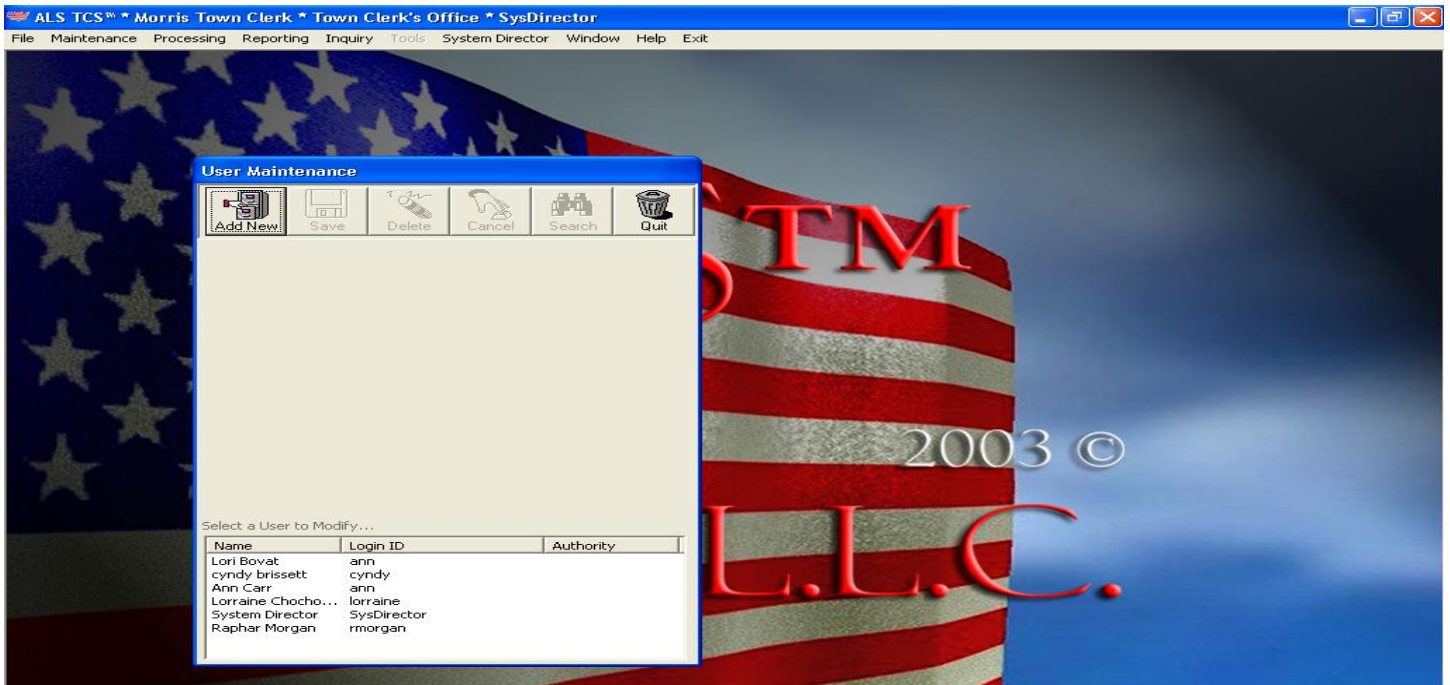
City Morris  
 County Litchfield  
 State CT ZipCode 06763 Zip+ 0066  
 Country

2003 ©

# TCS™-System Director©

## Version 4.2

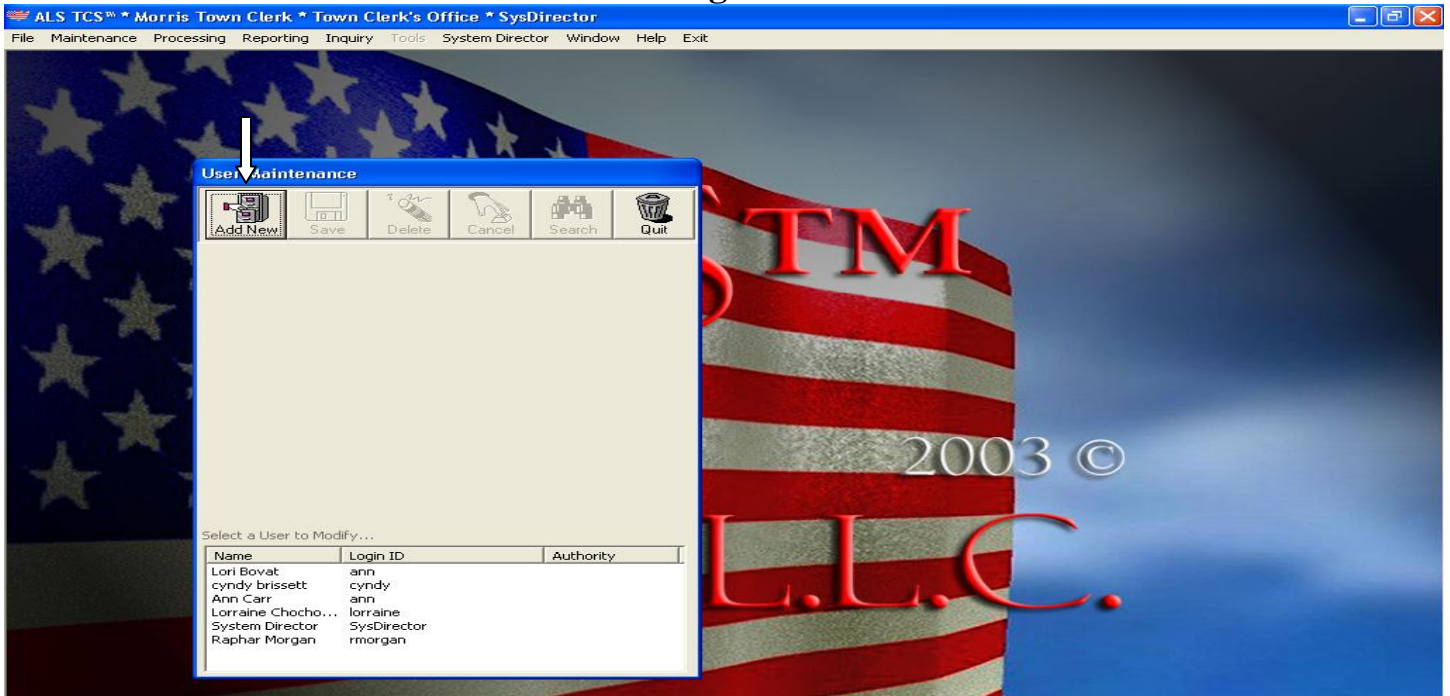
### User Security:



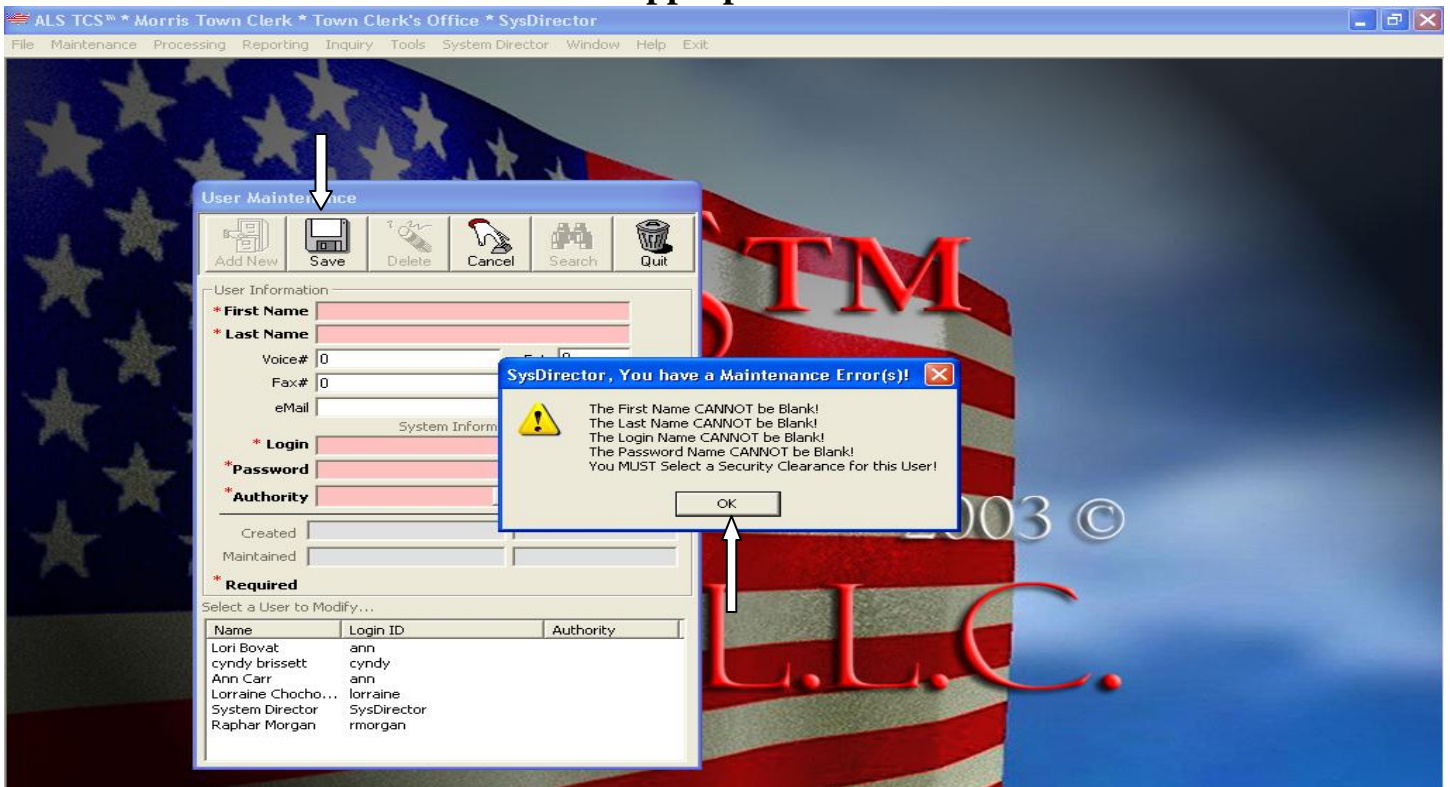
# TCS™-System Director©

## Version 4.2

### Adding a User

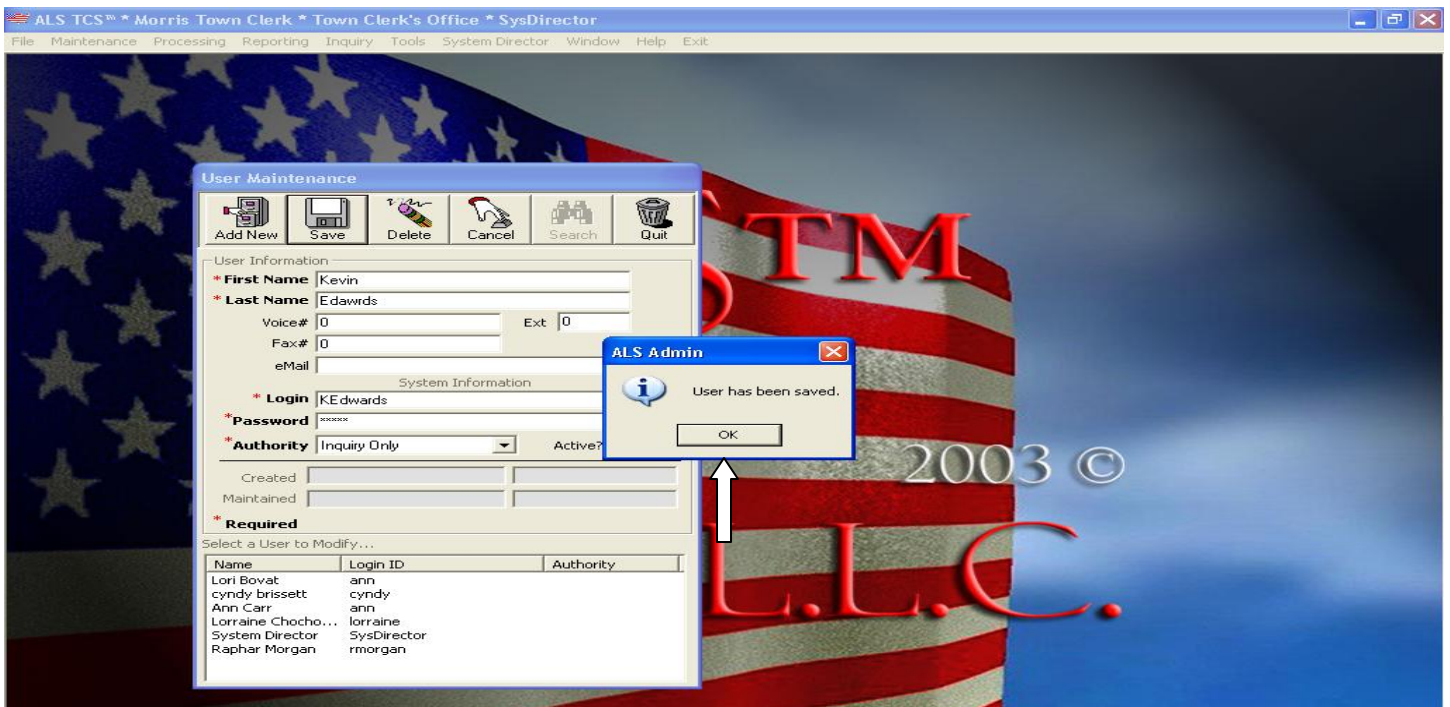


### Must Enter Appropriate Information



# TCS™-System Director©

## Version 4.2



# TCS™-System Director©

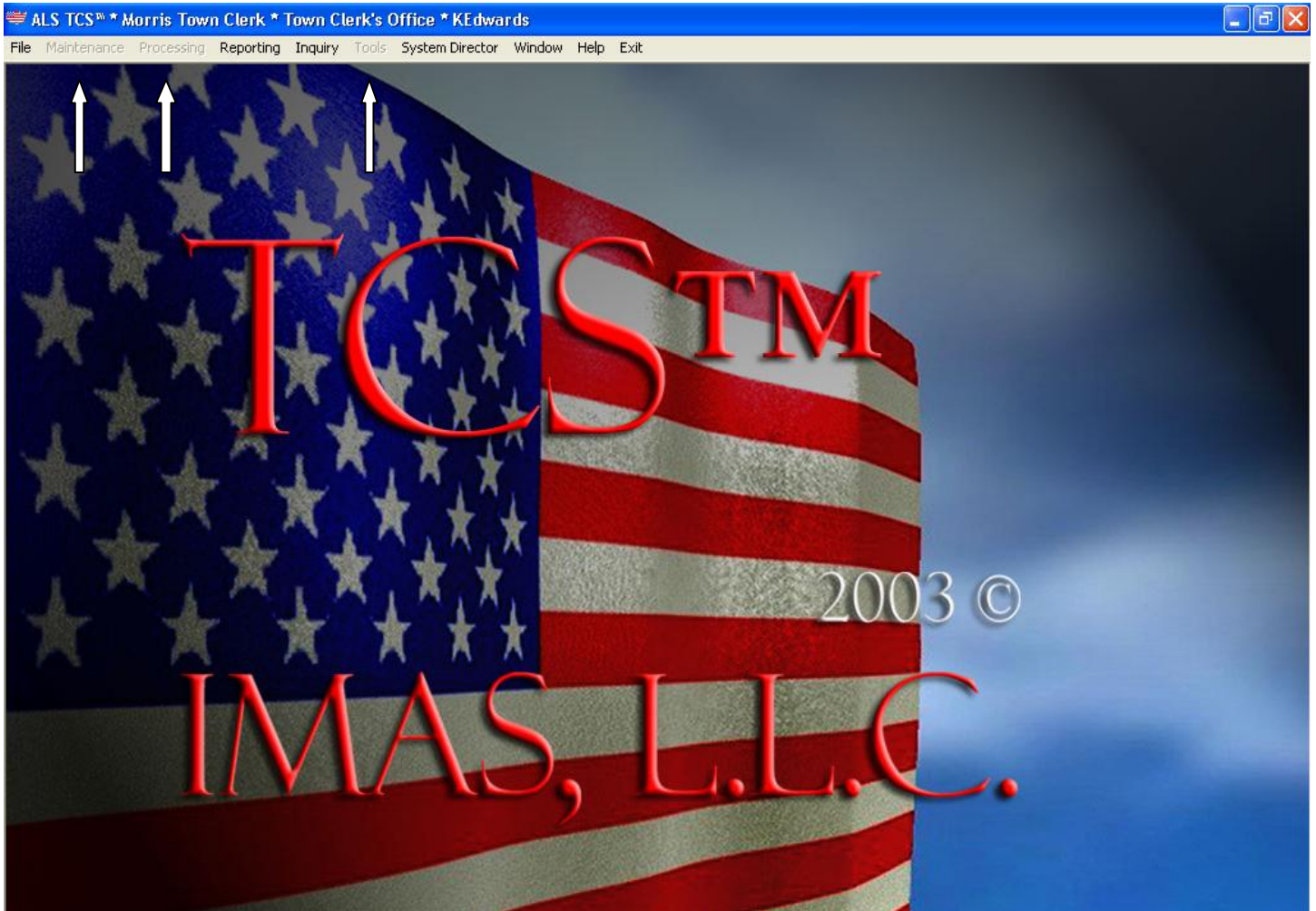
## Version 4.2



# TCS™-System Director©

## Version 4.2

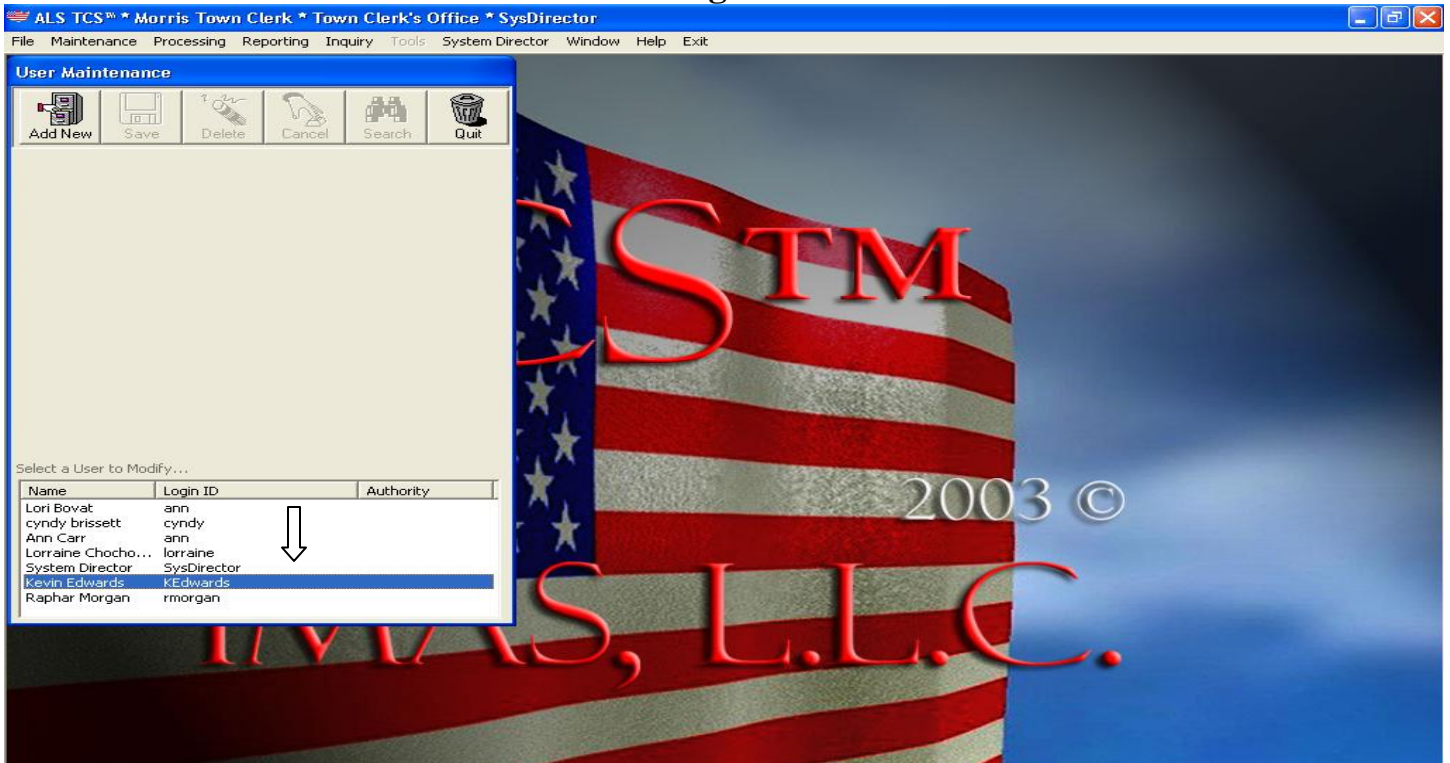
**Certain User Security Levels restrict user access to the application.**



# TCS™-System Director©

## Version 4.2

### Editing a User



# TCS™-System Director©

## Version 4.2

ALS TCS™ \* Morris Town Clerk \* Town Clerk's Office \* SysDirector

File Maintenance Processing Reporting Inquiry Tools System Director Window Help Exit

### User Maintenance

Add New Save Delete Cancel Search Quit

User Information

\* First Name |Kevin|  
 \* Last Name |Edwards|  
 Voice# |0| Ext |0|  
 Fax# |0|  
 eMail |  
 System Information

\* Login |KEdwards|  
 \* Password |\*\*\*\*\*|  
 \* Authority |System Administrator| Active?

Created |2/24/2011 2:31:00 PM| System Director  
 Maintained |2/24/2011 2:36:00 PM| System Director

\* Required

Select a User to Modify...

Name	Login ID	Authority
Lori Bovat	ann	
cyndy brissett	cyndy	
Ann Carr	ann	
Lorraine Chocho...	lorraine	
System Director	SysDirector	
Kevin Edwards	KEdwards	
Raphar Morgan	rmorgan	

2003 ©

IMAS, LLC.

ALS TCS™ \* Morris Town Clerk \* Town Clerk's Office \* SysDirector

File Maintenance Processing Reporting Inquiry Tools System Director Window Help Exit

### User Maintenance

Add New Save Delete Cancel Search Quit

User Information

\* First Name |Kevin|  
 \* Last Name |Edwards|  
 Voice# |0| Ext |0|  
 Fax# |0|  
 eMail |  
 System Information

\* Login |KEdwards|  
 \* Password |\*\*\*\*\*|  
 \* Authority |System Administrator| Active?

Created |2/24/2011 2:31:00 PM| System Director  
 Maintained |2/24/2011 2:36:00 PM| System Director

\* Required

Select a User to Modify...

Name	Login ID	Authority
Lori Bovat	ann	
cyndy brissett	cyndy	
Ann Carr	ann	
Lorraine Chocho...	lorraine	
System Director	SysDirector	
Kevin Edwards	KEdwards	
Raphar Morgan	rmorgan	

2003 ©

IMAS, LLC.

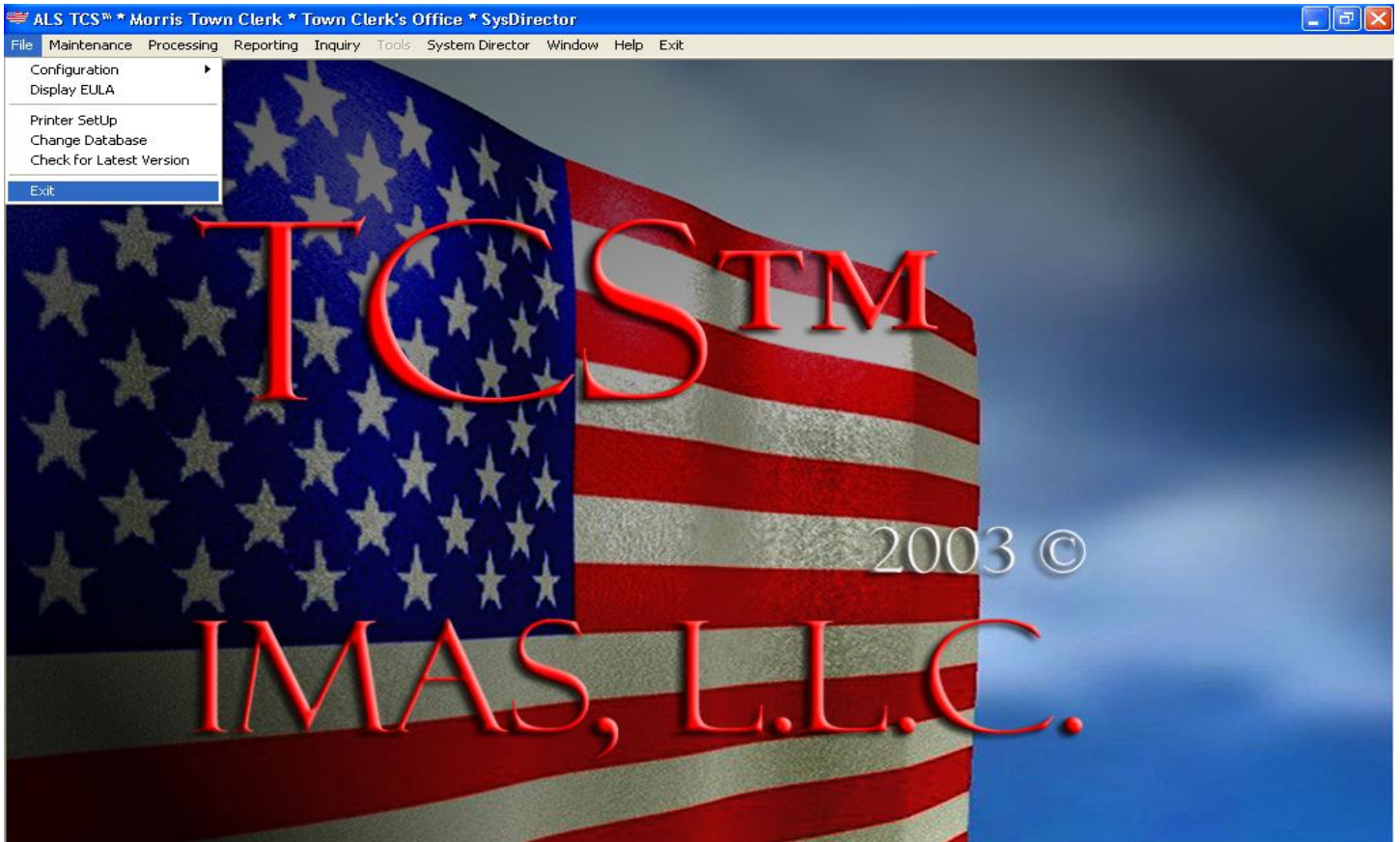
ALS Admin

User has been saved.

OK

# TCS™-System Director©

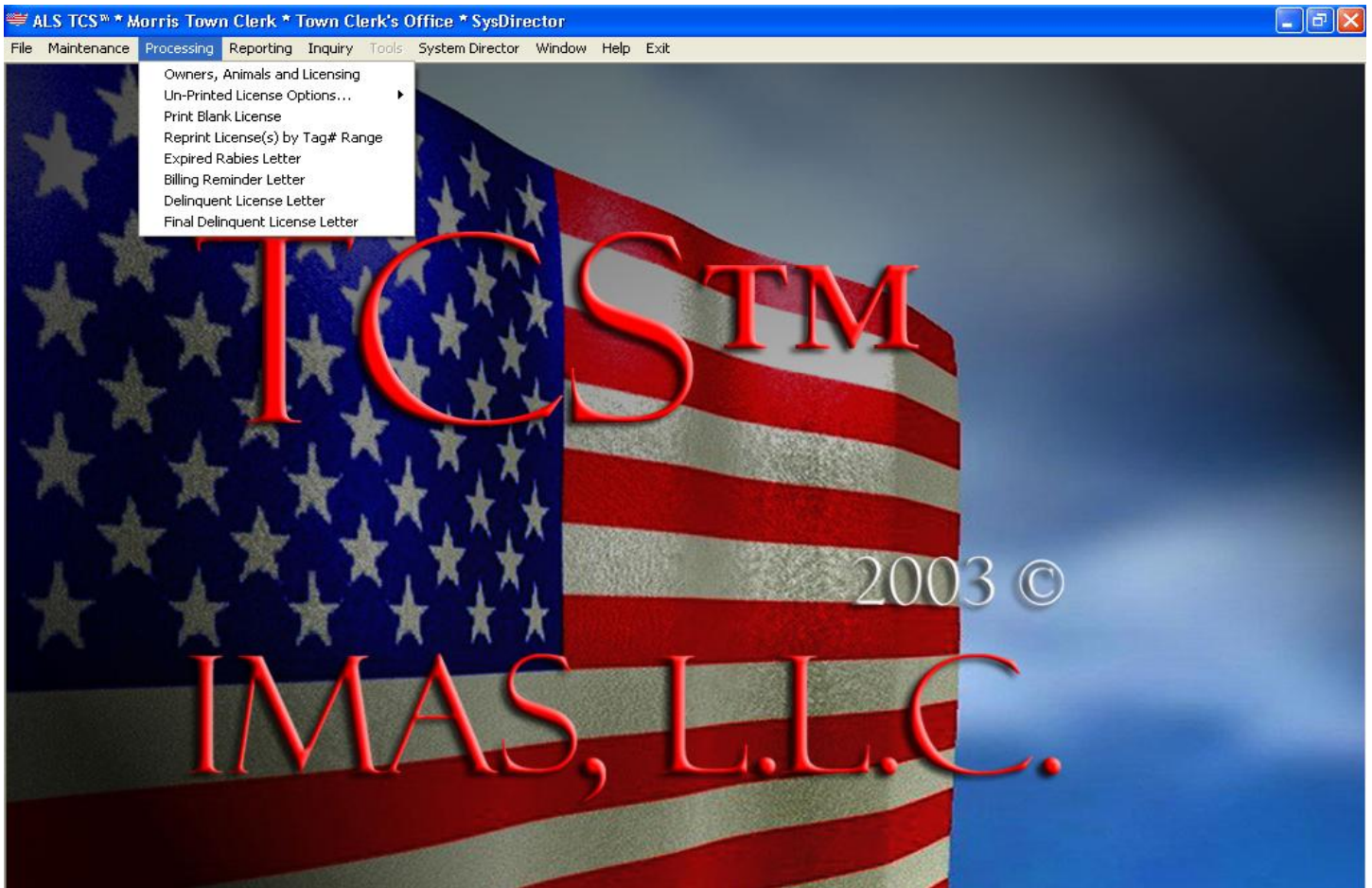
## Version 4.2



# TCS™-System Director©

## Version 4.2

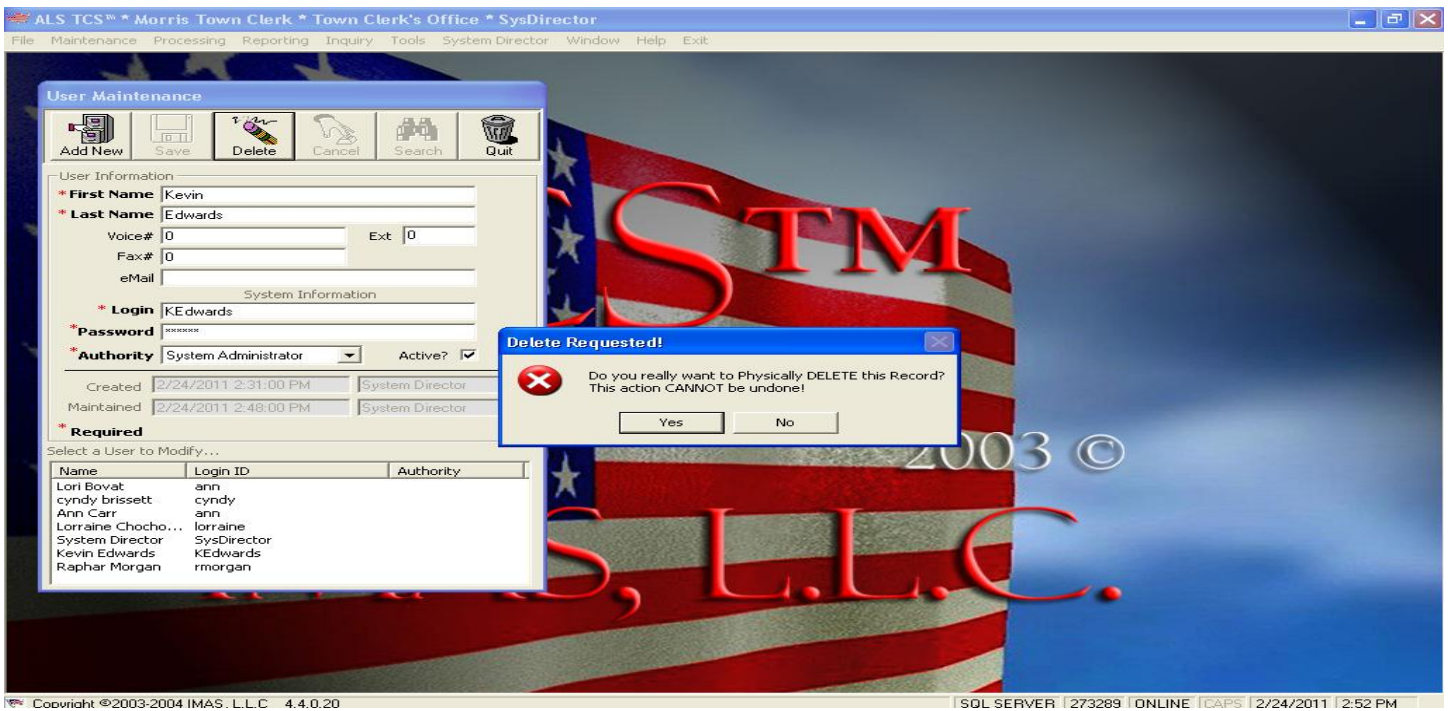
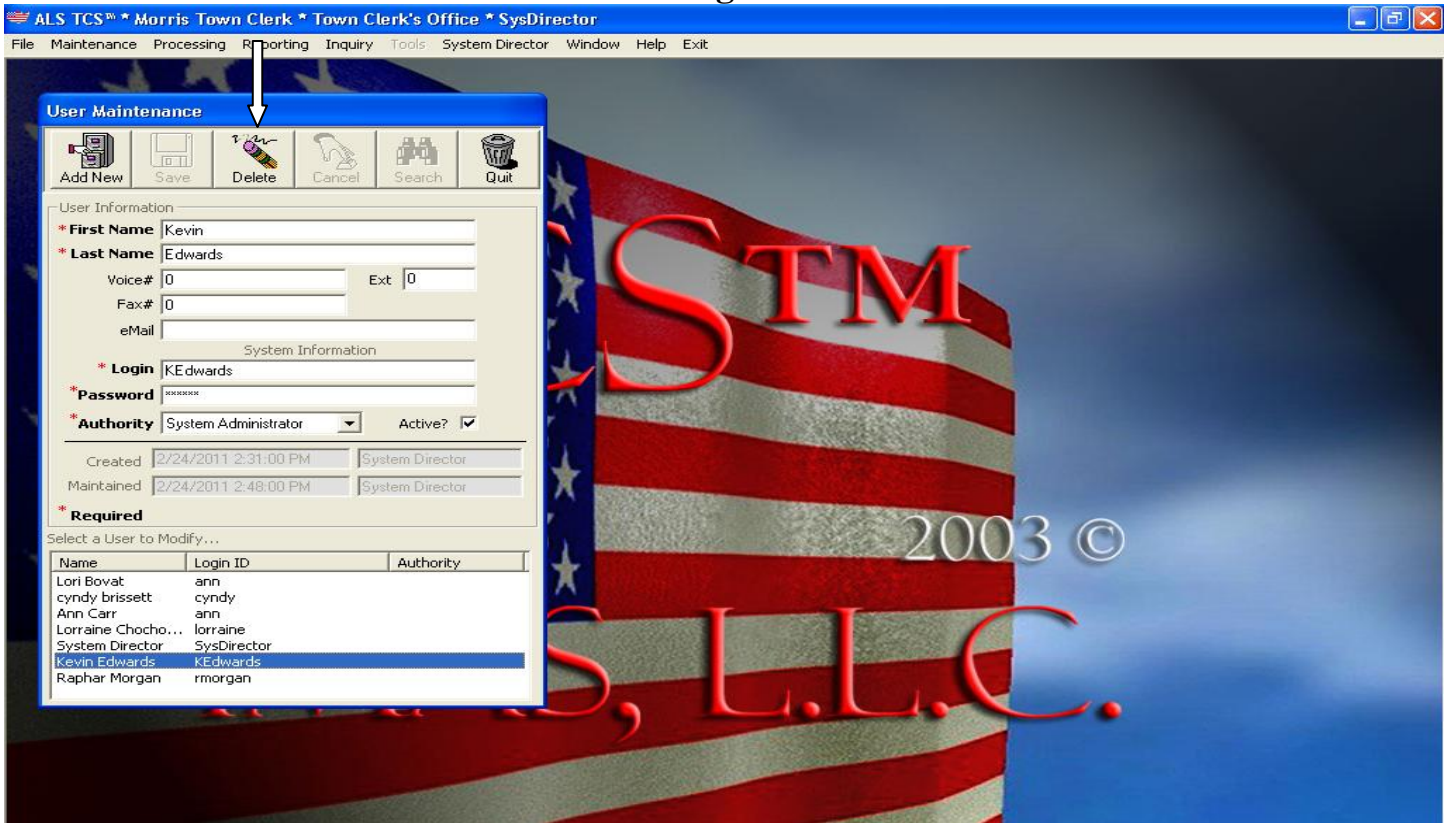
A User Security of System Administrator allows for full access to the application.



# TCS™-System Director©

## Version 4.2

### Deleting a User



# TCS™-System Director©

## Version 4.2

ALS TCS™ \* Morris Town Clerk \* Town Clerk's Office \* SysDirector

File Maintenance Processing Reporting Inquiry Tools System Director Window Help Exit

### User Maintenance

Add New Save Delete Cancel Search Quit

User Information

\* First Name  
\* Last Name  
Voice# 0 Ext 0  
Fax# 0  
eMail

System Information

\* Login  
\* Password  
\* Authority Active?

Created  
Maintained

\* Required

Select a User to Modify...

Name	Login ID	Authority
Lori Bovat	ann	System Admini...
cyndy brissett	cyndy	Inquiry Only
Ann Carr	ann	System Admini...
Lorraine Chocho...	lorraine	Inquiry Only
System Director	SysDirector	System Admini...
Raphar Morgan	rmorgan	System Admini...

2003 ©

STM, LLC.

User is no longer available.