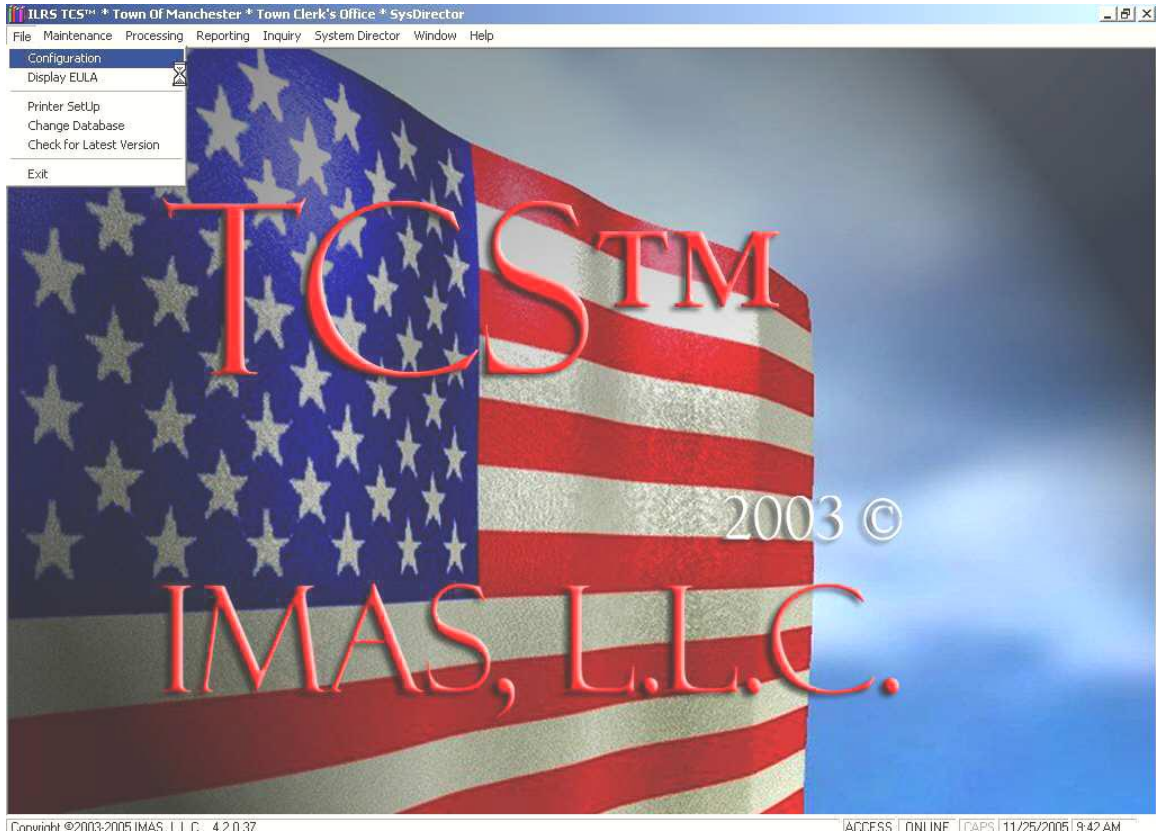


Instrument Indexing and Land Recording System© ILRS™

File Menu

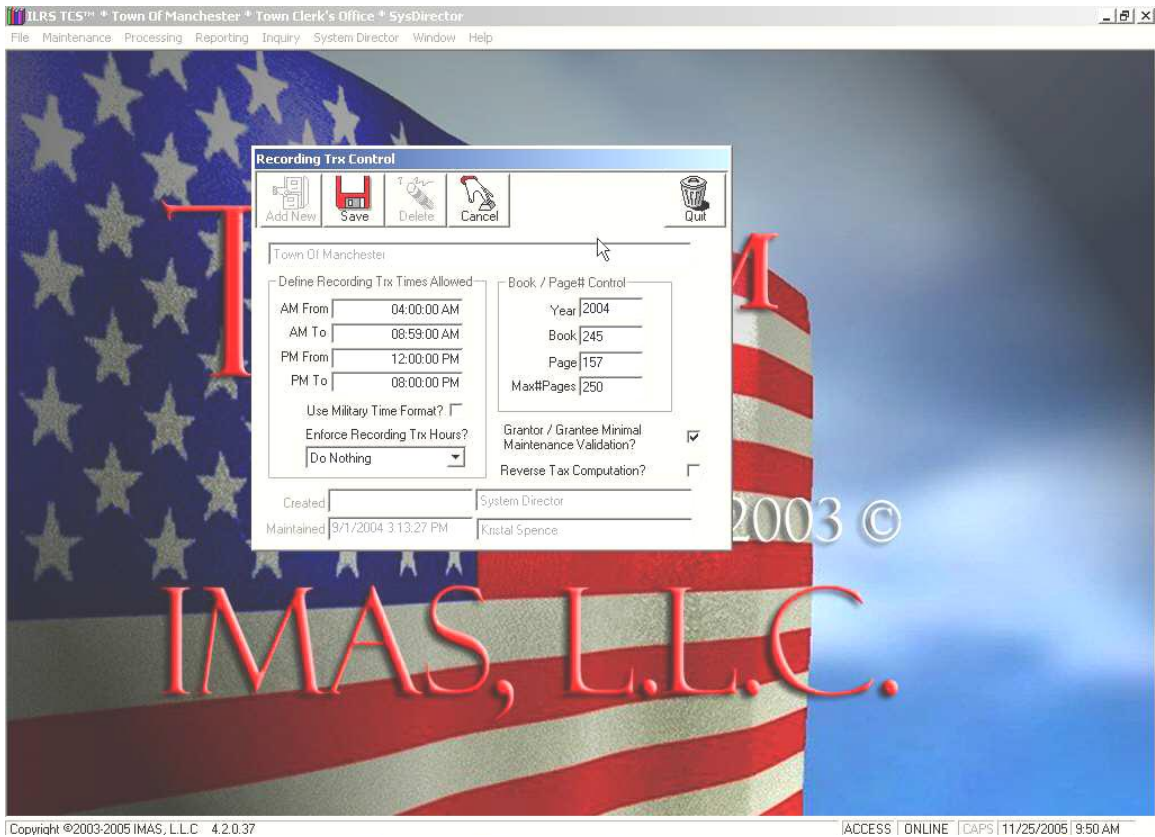
Where you can setup the ILRS configuration items, change the location of the database your going to be using with the application and setup your printer.



Configuration

Instrument Indexing and Land Recording System© ILRS™

You can access the applications configuration items by clicking on the “File” menu option and then selecting “Configuration”. In this form you can setup your allowable recording times and choose whether or not to enforce a requirement that no recording can be entered outside of the time range selected. Also within this form you can setup your book/page # controls, choose to allow a minimum grantor/grantee maintenance validation (not having to fill out the enter maintenance form) and choose to reverse the tax computation (reverse the format of entering the tax amount or the sale amount).



Display EULA

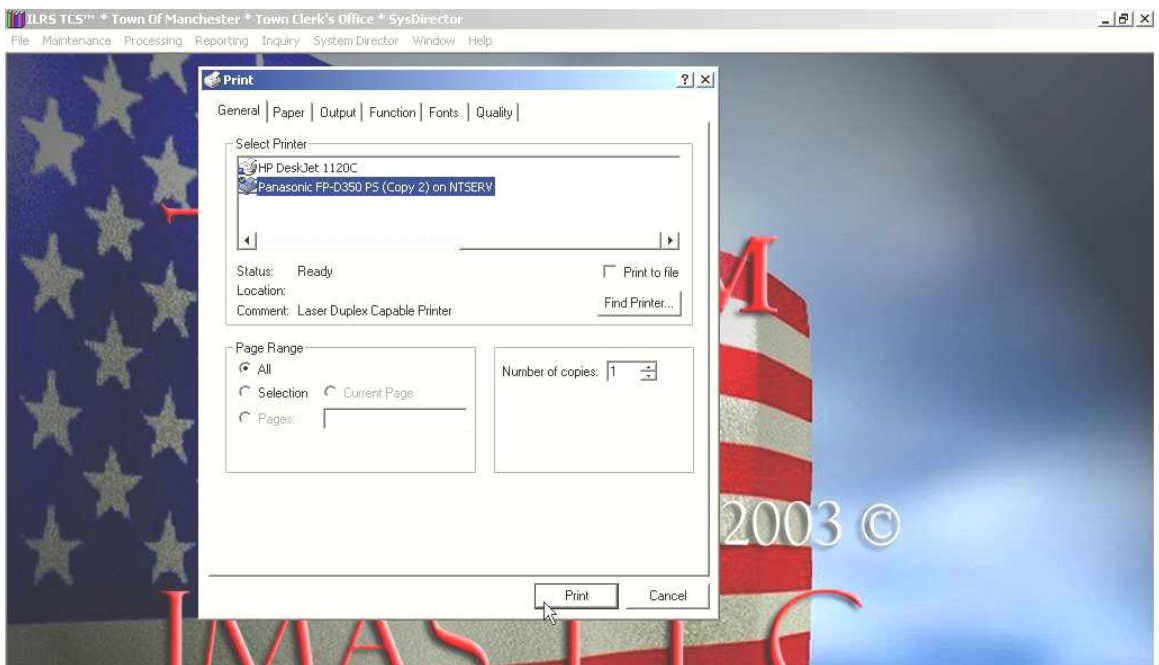
Instrument Indexing and Land Recording System© ILRS™

To display/review the End User Licensing Agreement (EULA) you will need to click on the “File” menu option and then select “Display EULA”. This will bring up a form containing the EULA which can be reviewed on the screen or printed



Printer Setup

To access your default printer setup you will need to click on the “File” menu option and then choose “Printer Setup”. This will bring up a form that will allow you to change what printer you want to print to, select how many pages to print, select what size paper you want to print onto etc.

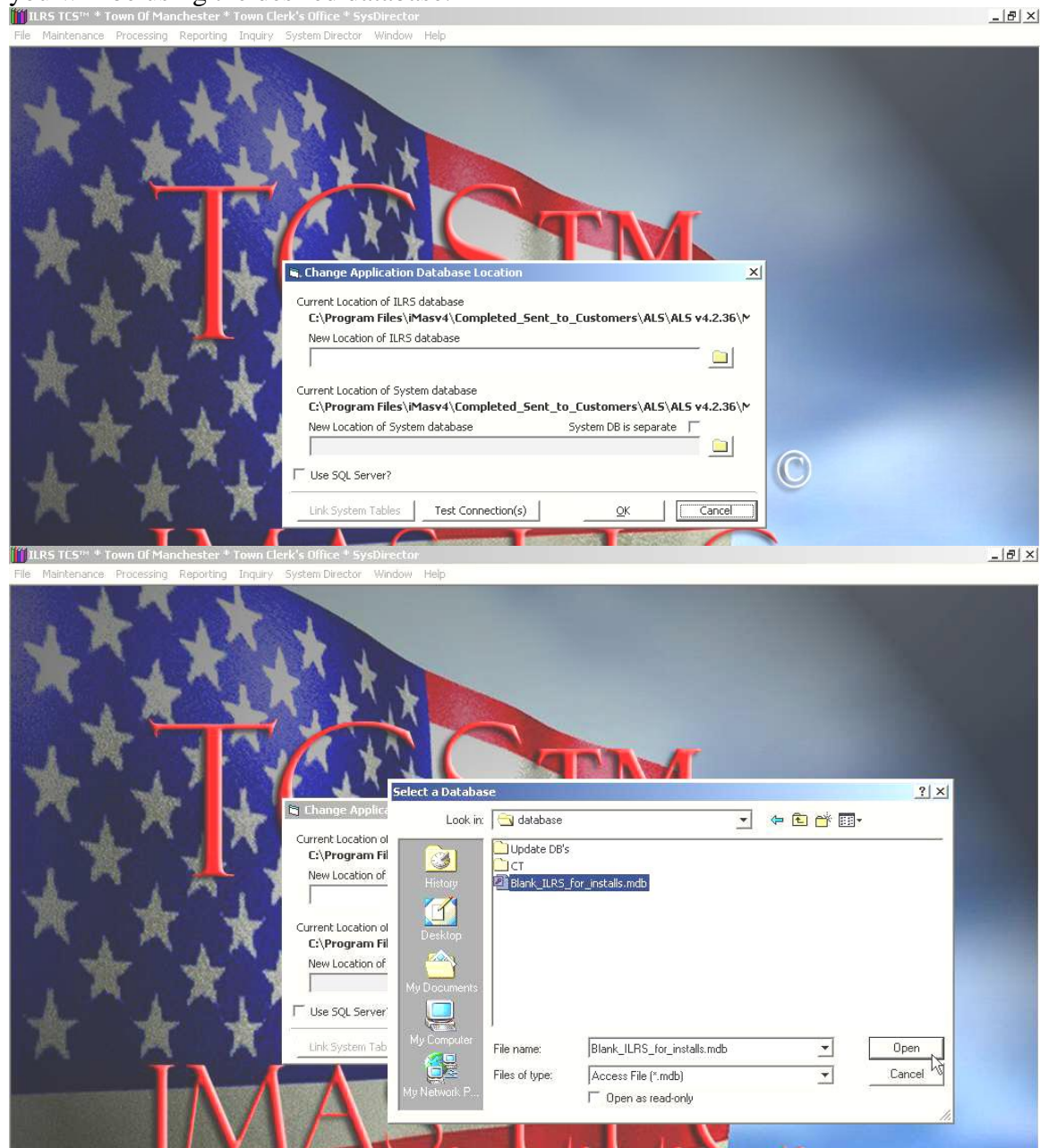


Change Database

To change the location of the database that the application is using you will need to click on the “File” menu option and then select “Change Database”. This will bring

Instrument Indexing and Land Recording System© ILRS™

up a form that will ask you to locate the database that you wish to use by clicking on the folder icon to the right and locating the desired database. Once you have done this, it is a good idea to click on the “Test Connection” button to ensure the connection to the database is good. After that, you can click on the “OK” button and you will be using the desired database.



Instrument Indexing and Land Recording System© ILRS™

